

REVIEW2014

SOUTH DEVON

STUD DIRECTORY
BETTER BULL SELECTION

THE BORTHWICK TROPHY
ROYAL MELBOURNE SHOW



CROSS BREEDING
SOUTH DEVON & ANGUS

ON THE MENU
IN ADELAIDE RESTAURANT'S

BEEF
AT ITS BEST



KILDARE

South Devons

Rick and Sue McDouall

Breeding Red or Black stud and Commercial bulls and cows from 300 cows mostly single sire mated.

Many thanks to our clients for their continuing support.

Bull sale at Kildare Friday, 22nd August, 2014

Most of the 2014 sires and progeny featured here are photographed in the paddock with no grooming or supplementary feed



Kildare Carlos is King!

Consistently produce heaviest progeny
Jim Leachman, Montana Century blood.



BC Progress 315U (AI Sire) USA

In the top 1% of all bulls of any breed or any time for feed efficiency.



Kildare Haggie H103, by Carlos Born 4/7/12.
At 660 kg he is the heaviest of 2014 Sale Bulls out of the paddock - 730kg 12 days later on feed



DV H17 Black Rock (AI), son of Progress, Born 18/3/12.

See his outstanding EBVs below.



Kildare H10 by Carlos, Born 16/7/12.



Kildare J111, Born 2/4/13. 465 kg on 27/5/14. 4/3 fat.
Grandson of Progress by DV G36.

May 2014 South Devon Group Breedplan

Sires	GL	Bwt	200	400	600	Milk	SS	EMA	Rib	Rump	RBY	IMF	VLR	SUP	Exp
Kildare Carlos		+2.2	+16	+30	+35	-1	+0.0	+1.2	-0.3	-0.4	+0.6	+0.0	+10	+17	+24
BC Progress 315U	-2.8	-2.1	+14	+23	+24			+1.6	-0.9	-1.3	+1.6	+0.0			
(These figures are improving due to positive fat on progeny etc.)															
Davelle Prog Blackrock H17	-1.6	-0.2	+21	+30	+35	+5	+0.4	+0.9	+0.6	+0.8	-0.2	+0.7	+34	+43	+52
Kildare Haggie		+2.0	+16	+35	+39	-3	+0.4	+1.4	+0.1	+0.1	+0.4	+0.2	+13	+26	+33



Blacks get premiums

Kildare Homer (left) good, growthy black bull by Kildare Romantic, shows plenty of growth and quality. We consider Romantic (right) to be a really top bull, very quiet, meaty, and his EBVs will improve with more information.

Romantic's grand sire, The Bend Romeo, was the Interbreed Grand Champion at Melbourne Show.

See Homer's and Romantic's EBVs below.



Sire	GL	Bwt	200	400	600	Milk	SS	EMA	Rib	Rump	RBV	IMF	VLR	SUP	Exp
Kildare Homer			+9	+9	+9			+1.3	+0.9	+1.3	+0.2	+0.3	+19	+19	+21
Kildare Romantic			+9	+9	+12			+0.2	+0.3	+0.4	+0.0	+0.3			
DV Black Jet G36	-2.1	-1.1	+19	+28	+32	+3	+0.9	+0.5	-0.3	-0.4	+0.2	+0.5	+30	+36	+45

Sydney Royal 2014 Beef Challenge

Venue - Wilga Feedlot, Bellata NSW

Many prestigious cattle were amongst the 51 teams of six which equal 306 head in the Domestic Section as the Sydney Royal 2014 Beef Challenge. This trial of about 90 days was held over a very hot and dry summer but the teams of South Devon heifers which showed the best marbling of any.

Number 168 was the only beast out of 300 with two marble score and was awarded a Bronze Ribbon for Taste Test.

Only 10 scored perfect points for carcase - Kildare entries had two of these gaining the 60 points.

One black heifer first place and only entry with an MSA Grade One.

Profitability was amongst the best too!

The exceptionally hot summer affected daily weight gains overall.



Cadman performs in NZ too!

Fraser and Sandra McKenzie of Wainuka South Devons, New Zealand, are very happy with their Cadman AI calves, born September '13.

The McKenzies believe all three calves are capable of leaving stud sires.

Below, heifer and bull calf by Cadman.



Kildare Cadman's EBVs

SOUTH DEVON GROUP BREEDPLAN EBVs						
GL	Bwt	200	400	600	Milk	EMA
+0.9	+2.4	+13	+23	+26	-5	+1.0
Rib	Rump	RBV	IMF	VLR	SUP	Exp
-0.2	-0.3	+1.2	-0.3	+2	+8	+12

So this is really a newsletter of happenings at Kildare - mostly good news but Progress will be progressive! Real curve benders, lower birth weights and good growth, extra fat and marbling.

Friday, 22nd August sale at Kildare - sons of Carlos, Cadman, Fearless, Tesbury C47, Romantic, Kildare 4080 and some yearlings by DVG36 Blackrock - About 20 Red and 10 Blacks perhaps.

Private sale of bulls and females any time



Champion Carcase School Section, Brisbane Exhibition 2013.

Bred by Ian and Sandra Ferris and exhibited by Tenterfield High School

Despite his colour, the steer is 80% South Devon blood by Kildare bull (Black).





PRESIDENTS REPORT

Time has passed so quickly since the last Review in 2011, printed to coincide with the 8th World South Devon Tour and Conference in Australia. In that time our communications team with Ian MacGregor at the helm have produced 4 wonderful "Newsletters" full of information about what is happening with South Devons in Australia prior to this magazine publication. This Review is a window to the world once again with another World Conference and tour starting in September 2014, this time in North America.

It has been both a privilege and a pleasure to be your President over the past 12 months. Our council meets regularly via telephone conference and I would like thank the state representatives and executive committee who have assisted me over the past year. You are a dedicated and hardworking team. I would also like to thank our Secretary David McDonald for his dedication to South Devons and his invaluable assistance to me. I will continue to strive for greater recognition for our breed throughout my term as President, and I thank you all once again for your friendship and support.

Despite the challenges the Australian Beef industry is experiencing in recent times, it has been a very busy and exciting year for South Devons. I am pleased to say there has been a slight increase in membership over the past year. We welcomed the reunion of former members of the South Devon Cattle Breeders Association with members of the SDCSA. We will be a stronger, unified group for future promotion and recording as a result of this union. We have also welcomed several new junior members to SDCSA. You are the future of South Devons and we will be offering you plenty of encouragement!

Congratulations to Sarah Peters from Queensland and Ryan Bajada from Victoria on their recent applications and selection for the



Young Persons Encouragement Award. The win sees Sarah heading off to South Australia for the Heifer Show as well as some time visiting Davelle South Devon Stud with thanks to David & Rochelle Leese and family, "The Davelle Experience", along with the support of SDCSA and QLD Branch. Ryan will also be attending the SA Heifer Show, with assistance from SDCSA and the Victorian Branch. We hope you both have a wonderful time.

South Devons have been well promoted at Field Days, Agricultural Shows, Feedlot and Grass-feed Trials, and Carcase Competitions around the country.

The biggest highlight for the year would have to be the winning of the prestigious Borthwick Trophy at 2013 Melbourne Show for a team of 3 purebred steers! This is a huge accolade for the breed!

Shaun & Sheree Hamson along with Billabong High School also took out the Grand Champion Steer for the second year in a row, a magnificent achievement.

Peter Hutchinson's South Devon X Angus steers won the 2013/2014 Gippsland Grass Feed Steer Trial at Lardner Park, Victoria. In 2012/2013 it was the Tesbury South Devon cross Angus steers which won this same competition. This is a testament to what we already know, in that South Devons are truly the

best breed to cross with Angus. Lee Leachman also reiterated this in his wonderful article written last year "Why South Devon", which we were grateful to be able to publish with his kind permission in our newsletter and which will also be used as part of a crossbreeding brochure in the near future.

The presentation on ABC Televisions Landline program, featuring Richard Gunner (of Richard Gunner Fine Foods) and Jock Zonfrillo (renowned chef) in South Australia using South Devons from David & Rochelle Leeses' Davelle Stud sang the praises of South Devon Beef as "a taste sensation". The Leese family also shared with 2 other SA breeders in hosting Lane Giess from USA for a short period after he participated in the 2013 International Meat Judging competition at Wagga Wagga, NSW as part of the Kansas State University's Meat Judging Team. KSU won that competition by just one point from the home team Charles Sturt University!

Australia looks forward to hosting a young person from the UK in May next year to coincide with the Beef Australia 2015 event to be held at Rockhampton, "The Beef Capital of Australia", in Queensland. Plans are already underway for a display and a good showing of South Devons at this event.

Ian MacGregor has put together an amazing publication once again with this Review. Thanks to all those who have supported him with your stories, poems and advertisements. The stories on the following pages are a testament to the enthusiasm of breeders and the great attributes of Australian South Devons.

LEONIE DALEY
President, South Devon
Cattle Society of Australia Inc.

**NEW WEBSITE
COMING SOON.**



SECRETARY'S REPORT

While the last three years since the previous "Review" have been another difficult period for agriculture in Australia, the South Devon breeders have "dug in" and survived! There have been adversities of more droughts, floods, bush fires and falling markets to keep the challenges "in our face". However, I congratulate all members of the Society for your resilience and ability to "make the most of what you have got". I also congratulate your President, Leonie Daley, and all the Councillors for continuing to work so well for the Society.

Ian MacGregor and his Communications Committee have done a tremendous job with the production of four coloured newsletters over the last 2 years. While use of new computer technology is attractive to some of our members, there is still wide appreciation of "hard copy" material for general reading and promotion of the breed. The next task for this Committee (after the Review) is a revamp of the current South Devon website – keep your eyes out for it. However, both the Review and the website need more input from the general membership. Please forward any photos, stories and reports to Ian for use in these areas.

I am pleased to report that the membership of the Society has increased somewhat over recent years. However, we are still "small" in numbers by comparison with some other societies and a lot of input to activity is of voluntary nature. As at January 2014 there were 6 life and 41 full members, 4 junior and 88 commercial members making a combined total of 139 members. It is pleasing to see another increase in the number of commercial members as more "outsiders" buy South Devon bulls and females for introduction to their herds. The Council decision to continue the offer of 2-years' free membership to "new" buyers



whose registered animals are transferred by their original owners through the Society records appears to be getting due vindication.

Leonie has told you (in the President's Report) about the two successful junior members through the "Young Person Encouragement Award" - whereby it hopes to assist young people to achieve higher goals in self-development and promotion of the breed. This program is now "open" for 2014 and needs both approval and support from all State Branches which will receive and consider suitable nominations from junior Society members. Each Branch is then invited to submit one or two nominations to the Federal Council which will then decide which applications can be approved for appropriate assistance. Funding for the program is to be 1/3 federal, 1/3 State Branch and 1/3 applicant. More details are available from State Branch Secretaries or myself.

The main time for our members to get together each year is for the Annual General Meeting (AGM) which is held at a different location each year in conjunction with a more general beef event and sometimes a three- or four-day tour of the local area. In 2011 the AGM was held in Bendigo, Victoria in conjunction with the National Beef event. There were 8 exhibitors of South Devon cattle at this event which is a record for South Devons

in recent times. However, there was no related "tour" that year because of the World Conference scheduled for September that same year.

The AGM in 2012 was held in May at Rockhampton to coincide with the Beef Australia Expo. This "Expo" is held during the first week of May every third year and is probably the largest single event in Australia for both stud and commercial beef cattle. If you haven't attended this event before, the next one is scheduled for 4th to 9th May 2015 and will be well worth the visit. In 2013 the AGM was again held at Bendigo, Victoria to again coincide with the National Beef. It was accompanied by an amazing tour of north-east Victoria, south-east NSW and south-east Victoria. Those who were fortunate enough to make this trip were impressed by the cattle they saw, the tremendous scenery and was very much appreciated by all participants. Bob Wilton did a great job organising the schedule and daily activities.

It was decided that the AGM for 2014 would be conducted for the first time via telephone hookup and participants were happy with this form of communication as an alternative to the "face to face" meetings.

This decision was partly due to the large number of usual attendees having made arrangements to attend the World South Devon Conference in September 2014 in the United States. After the very successful World Conference in Australia in September 2011 – due largely to the tremendous organising by Daphne Lines – I wish all participants of the Conference in the United States a fantastic tour and experience. Our Society is an important part of the World South Devon Association and good communication at this level helps to maintain strong relations on the global sphere.

DAVID MCDONALD
Secretary



SOUTH DEVONS WIN THE BORTHWICK TROPHY

The South Devons have won the Borthwick Trophy at this years Royal Melbourne Show. This trophy is awarded to the team of pure bred steers who accumulate the most points after being judged on the hoof and then on the hook.

The South Devon steers were exhibited by Billabong High School and Team H and had a grand total of hoof and hook score of 353.42 points.

Billabong High School's South Devon steer achieved more than just the Borthwick Trophy title. The steer, bred by Shaun and Sheree Hamson, Kirndeene South Devons, Culcairn, N.S.W. also won the champion export and grand Champion carcase award as well as champions school carcase.

The Kirndeene steer was placed fourth in the export weights on-hoof and was awarded 91.62 out of 100 points in the carcase judging, including full points for saleable meat yield and 19 out of 20 for market specifications. It was also a full brother to last year's Grand Champion carcase steer at the Royal Melbourne Show.

A total of seven South Devon steers were exhibited at this years Melbourne Show with six out of seven scoring in the top five in the live judging classes. The seventh was a good steer but just failed to finish sufficiently for the Export Class.

The six steers each finished with over 82 points for their combined hoof and hook results.

Steer preparation group, Team H exhibited the other two South Devon steers in the team. One was bred by Chris and Leonie Daley, The Bend South Devons, Mirboo North while the other was bred by Pete, Sonia and Hayden King from Garfield.



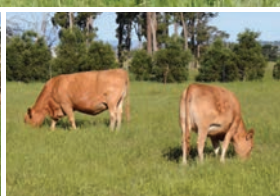
The names of the handlers of the South Devon Borthwick team are:-

Lucus Kallady - Team H; **Michaela Glasser** - Team H;
Emily Pinnuck - Billabong High School





Ian and Julie MacGregor
 1312 Oaks Road, Bracknell Tasmania 7302
 Ph: (03) 6397 3328 / 0418 306 524
 Em: glenstrae4@bigpond.com





The Two Day Course

By P.A. Barton, Clermont, QLD

There's a blight upon the country that's really quite degrading.
Invented by the bureaucrats to stop their jobs from fading.
A nasty imposition that has now been put in force.
It's become an obligation to attend a two day course.

There are courses by the hundreds to improve your education,
It's now become essential that you get accreditation,
You will need that piece of paper or you'll really be in strife,
Although what you will be learning, you have been doing all your life.

In the drought of '69 I cut from dawn to dark,
And fence posts by the thousands I have sawn from iron bark.
Now it's hard to fathom that I could break the law,
If I dare to start the motor of my trusty old chain saw.

Take chemical applications, that's something I know best,
By now I must have sprayed every single living pest,
From cattle ticks to buffalo fly, from burrs to rubber vine,
Now a course must be attended or I'll risk a whopping fine.

Just ask those who know me, if I know how to use a gun,
From every sort of weapon, I've shot bullets by the ton,
Thought I've been proficient since I reached the age of ten,
It seems this is something that I have to learn again.

I've studied on computers, learnt how to market crops,
Benchmark & QA, I've been to those workshops.
Breed plan is something I now understand in full,
It took me two days to learn how to scrotum test a bull.

My stock are getting poorer from the general lack of care,
And all my bores and fences are in sad need of repair,
You may think I'm lazy, but it simply isn't true,
I'd go to work tomorrow, but there's another course to do.

The bank would like to see me for the funds are getting low,
And I'd like to get the time to plant the crops I need to grow,
My wife and kids are missing me cause I'm hardly ever there,
I'd love to stay at home, but there's this course in cattle care.

If I continue in this vein, I'll surely end up broke,
All these accreditations are really just a joke,
I'd rather wrestle with scrub bulls or ride on bucking horses,
Than by subjected to these TWO DAY BLOODY COURSES.

EDITORS NOTE . . .

After producing the four newsletters over the past two years, this is our first foray into a South Devon Review and we have been able to do this because of our dedicated members encouraging and interviewing enthusiasts of the breed and finding out what they are doing to help get the message out there.

SOUTH DEVON CATTLE SOCIETY OF AUSTRALIA INC. COUNCILLORS 2014

LEONIE DALEY

PRESIDENT

"The Bend"
640 Grand Ridge Road
MIRBOO NORTH VIC 3871
E: thebend.sd@skymesh.com.au
T: 03 5664 8369
F: 03 5664 8291
M: 0488 512 873

BOB WILTON

VICE-PRESIDENT and Councillor NSW

PO Box 439
BEGA NSW 2550
E: rowindapark@iprimus.com
T: 02 6493 0494
F: 02 6493 0494
M: 0414 713 092

DAPHNE LINES

TREASURER, Councillor SA and 3rd member of Executive

"Gum Hill"
PO Box 9
MT BRYAN SA 5418
E: lgumhill@bigpond.com
T: 08 8893 4028
F: 08 8893 4023

COLIN THOMPSON

Councillor QLD

37 Cedar Street
MALENY QLD 4552
E: louanneley@gmail.com
T: 07 5494 4574

DAVID CORKER

Councillor WA

RMB 115
BOYUP BROOK WA 6244
E: bullshop1@westnet.com.au
T: 08 9330 4326
M: 0412 390 315

SHEREE SEIFFERT

Councillor VIC

2210 Hendy Main Road
BELLBRAE VIC 3228
E: sherwoodpark.sd@bigpond.com
T: 03 5261 3724
M: 0418 583 321

ALL CORRESPONDENCE TO . . .

DAVID MCDONALD

South Devon Secretary

2 Mount Ballow Road
MURWILLUMBAH NSW 2484
E: dandjmcDonald@yahoo.com
M: 0401 323 887

CROSSBREEDING SOUTH DEVON WITH ANGUS

The South Devon has long been known for its' quiet nature, meat quality and carcass ability. A quiet temperament certainly plays a huge role because meat tenderness is certainly improved with an animal which isn't stressed. I believe that if there is a shift to a value based payment system in the Australian Beef Industry then South Devons are poised to take advantage of their market share as they are quiet, grow fast, yield well and the meat quality is amazing. In an Australian market which is dominated by the Angus breed it is very pleasing to see the gains to be had by crossing Angus with South Devon.

South Devon cross Angus steers' ability to perform well in carcass competitions, grass feed and feedlot trials in recent years has demonstrated that possibly the best animal to cross with Angus cattle is a South Devon. At the Lardner Park Grass Feed Steer Trial held annually in Gippsland Victoria, where many different breeds and crossbreeds are run on the same pasture from June until December, South Devon cross Angus have won the event many times. Animals are judged in pairs, with regular weighings', and at the end of the grazing period carcasses are assessed using the Meat Standards Australia Grading System (MSA). The objective of the trial is to provide information on growth and carcass attributes. The South Devon X Angus has been winning this competition for the past few years with the Grand Champion carcass award, highest weight gain pair and Combined Weight gain and Carcass awards. In 2013 it went to steers entered by Peter Hutchinson of Winterwood stud, and in 2012 Lois Duplex and Jeremy Walsh from Tesbury Stud. In 2012/2013 South Devon X Angus steers entered by John & Angela Bruce, Stanley, Tasmania in the hoof and hook competition of the Circular Head Agricultural Society. The mixed yarding of cattle was grazed for a period of 30 days between the hoof judging and the hook judging on a farm adjoining the abattoir. The Japanese Export bullock class was won by the Bruce family with their steer scoring over 92 points and their other steer scoring 89 points to gain 4th place. At the Beef Spectacular Feedlot Trial at Jindalee in New South Wales a pen of 5 South Devon Angus steers bred by Lois Duplex and Jeremy Walsh of Tesbury scored in 14th place out of 120 teams for feedlot performance. Of significance for the South Devon breed is a recent report by Lee Leachman, Leachman Cattle Co Colorado, following feed efficiency tests across the USA. Printed below with kind permission by the author is an extract from his article first released in the North American Sire Summary 2013.

Lee states - "The challenge to crossbreeding is finding the right breed to cross on Angus -The Hereford X Angus steer lacks Angus levels of marbling, has insufficient muscularity, and does not reach adequate carcass weights before getting too fat. The South Devon breed keeps Angus marbling, adds to muscularity, and increases carcass weight. For these reasons, South Devon is the best British breed crossbreeding option."

"Beyond hybrid vigour, the biggest opportunity for improving profitability is by reducing the feed required to produce a pound of beef. This starts with the cow and how much she eats. Then, the feed conversion on the steers is important - In contrast (to the Angus) the South Devon breed has shown itself to be lower in feed intake and more efficient on gain. Both results from the Midland Bull Station and our results from our feed intake testing at Leachman Cattle have shown that the average South Devon ranks very high on feed efficiency. In fact South Devon might be the most efficient beef breed."

The global beef market is in exciting times with increased demand driven by growing population and growing income levels - The smart commercial ranchers will seek genetics that improve the profitability of their herd. The South Devon breed is ideally positioned to establish itself as a key player in profitable beef production." Leachman Cattle Co, Colorado. The proof of the gains to be had in crossing Angus with South Devon is out there. We all want to increase our profitability! "Why would you go past a South Devon in your crossbreeding herd?"

LEONIE DALEY President SDCSA



SEA CHANGE

A magazine subscription for a birthday present led to a "sea change" and the Lincoln South Devon Stud. Reading about cattle breeds, the South Devon attributes caught the attention of Roy Scragg who was then living in New Guinea. With an acreage at Victor Harbor calling out for grazing, Roy began what was to be a long association with the breed. Travelling to World Conferences with Joy at his side, in New Zealand, the UK and the USA, hosting the Australian tour of 1989, with the hospitality skills of Joy, becoming the Australian President and founding the Lincoln herd which had many successes in the field and show ring over the years. His visionary attitude led to the purchase of Kallamurinna Station and the movement of South Devons to the edge of the Simpson Desert. Lincoln has influenced many herds within Australia and abroad and retirement from active breeding membership has not meant retirement from a continuing interest in South Devons. Roy celebrated his 90th birthday in February and his "sea change" is just that on the Esplanade at Glenelg, South Australia.



The Bend Hugo with visitor to Lardner, Kylie Larkin

FARMWORLD FIELD DAYS LARDNER PARK 2014

The Farmworld Field Days were held at Lardner Park Gippsland in March 2014. The South Devon Society have a permanent site on the grounds and each year it is manned by local South Devon members with the cattle on display in recent years provided by Chris & Leonie Daley from The Bend South Devons, Mirboo North. Chris & Leonie stayed for the 4 days with assistance from Peter Hutchinson, Winterwood South Devons.

The site was an impressive display of heifers and a bull as well as Peter's framed certificates detailing his numerous wins in the Lardner Park Grass Feed Steer Trial 2013/2014, for both his purebred steers and also his South Devon Angus cross pair which won the overall Grand Champion weight gain and carcase award. The fantastic win to 3 purebred South Devons in the Borthwick Trophy Carcase Competition at Royal Melbourne Show 2013 was highlighted as well as the irrefutable evidence of the value of crossing a South Devon with Angus as mentioned in the article by Lee Leachman and proven yet again by the steer trial win.



Any wonder the site was busy with plenty of information and pamphlets given out to visitors! The Bend Hugo (on display) was also sold to some very keen cattle breeders looking to achieve the same excellent results. Hopefully the information received by many visitors will give them the incentive to try a South Devon bull and see the great results for themselves.

LEACHMAN ELITE SOUTH DEVON

Written by Lee Leachman in ad in 2014 North American Sire Summary

The South Devon breed has emerged as the dominant British breed alternative to Angus.

With extensive experience breeding South Devon cattle that dates back to our own purebred herd started in the 80's in Montana, we are confident that the South Devon breed is more than competitive on \$Profit. Much of this is based on their unique combination of heavy muscling with marbling levels

comparable to Angus. In addition, substantial evidence now suggests that the breed excels on feed efficiency.

Based on our relentless pursuit of higher profitability cattle, we will incorporate the best South Devon bulls available into our Stabilizer composite program. These bulls are ideal to cross on Angus, Sim-Angus, and Gelbvieh-Angus females.



RESEARCH PAPER

GEORGIA SMART

THIS IS AN EDITED COPY OF A RESEARCH PAPER PREPARED BY GEORGIA SMART OF WIRRABARRA IN SOUTH AUSTRALIA'S MID NORTH FOR HER YEAR 12 STUDIES AT THE GLADSTONE HIGH SCHOOL.



This investigation compares two South Devon steers and two grain rations, 0.7% of body weight in barley grain mix and 2% of body weight in grain. The steers were kept in a feed lot for 64 days and weighted weekly, with grain, supplement and hay intake recorded daily. Calculations were made into weight gains, feed intake/conversion, financial benefits of the feed lot and visual assessment.

The comparison of two feed rations determines which is the most beneficial when producing a beast ready for market. A range of calculations into weight gains, feed intake/conversion, cost/day compared to the cost/kilogram and the percentage of body weight consumed per day are made.

Two steers, A & B were purchased from the Gum Hill South Devon Stud at Mt Bryan, South Australia and weighed when placed in yards where the introduced process began. Steer A weighed 320kg, and Steer B 325kg. Both steers were offered Laucke Mills Grain balancer 60 throughout the experiment. The introduction process involved introducing the steers to the grain, supplement's and hay until their weight and ration percentage was achieved. Over this introduction both steers were kept in a larger yard together with adlib hay. However, while consuming grain the steers were separated until the grain was eaten.

Samples of barley and barley/vetch hay underwent feed quality tests to find nutritional values, this allowed the nutrients fed to the steers to be known. Protein, energy fibre and minerals were included in the diet.

Both visually and mathematically, steer B developed to a higher standard than steer A; proving the hypothesis incorrect. The muscle definition of both steers when visually assessed showed steer B was a more structurally sound beast, with a longer body allowing for more prime cuts. The visual assessment of the steers was important in recognising when the beast was ready for butchering. Mathematically, steer B had the largest weight gain with a total of 83kg compared to steer A's 70kg during the withholding period.

Steer B had a smaller grain feed ration so therefore consumed the smaller amount of grain and additive pellets. Steer A consumed a total of 391.3kg of grain and 23.48kg of additives, compared to steer B which consumed 143.05kg of grain and 8.57kg of additives.

SUMMARY OF FINDINGS

TOTAL FEED INTAKES WERE:



STEER A		STEER B	
GRAIN	391.3kg	GRAIN	143.045kg
HAY	203kg	HAY	309kg
ADDITIVES	23.478kg	ADDITIVES	8.568kg
TOTAL	605.778kg	TOTAL	460.613kg

TOTAL COST OF FEED REQUIREMENTS:

STEER A		STEER B	
COST	\$178.75	COST	\$113.24

TOTAL PROFIT:

STEER A		STEER B	
PROFIT	\$22.50	PROFIT	\$126.51

TOTAL % OF BODY WEIGHT CONSUMED

STEER A		STEER B	
PERCENT	2.43%	PERCENT	1.76%

STEER A gained good condition around the hind quarters, shoulders and along the top line. It was felt that the steer had a nice fat layer surrounding the muscle all over the beast, however lacked in length.

STEER B filled out nicely with good muscle coverage all over the body. At the hind quarters, the rump of the steer is protruding out and a golf ball sized hollow is located between the rump and the tail top. When one's hand is rubbed along the body of the beast the skin is soft meaning tender meat will be produced at the time of butchering.

In conclusion, Steer B proved to be the steer with the larger weight gain and therefore a feed ration of 0.7% of body weight was more beneficial, he gave a greater financial benefit as he required less feed for more weight gain. However Steer A contracted acidosis during the introductory stage of the programme which would have an effect on the final results.

The full research paper can be viewed on the new Australian South Devon Cattle Society website when it is up and running.



ST GEORGE STATE HIGH SCHOOL CATTLE CLUB AND SHOW TEAM

The St George State High School Cattle Club and Show Team was established in 2009 to support the growing interest from students to show cattle at a competitive level. The students and I have developed the programme to ensure that the focus is on learning about the husbandry of cattle and developing a strong awareness of 'stock sense'. This has allowed us to compete successfully for the past 6 years at St George, Farm Fest, Heritage Ag and Roma Shows.

The Show Team members have had varying successes in Parading and Junior Judging competitions and it is not uncommon for our Show Team to have students in the finals of these events. In 2013, we had a student place first in the Junior Handlers class at Ag Show and a 5th Placing at Farm Fest in a fiercely competitive class. 2013 also saw our Show Team selected in the finals of the Junior Judging section at each show we attended. In 2014, we have attended Roma Show and this saw our students place 2nd and 3rd in the Junior Handlers class and we had two 2nd places in the Junior Judging and a 1st in same class and this student went on to be awarded the Champion Judge of Roma Show.

As a Show Team, we have a deliberate focus on the health and welfare of our animals. This enabled our students to take advantage of the UQ Animal Science Challenge competition that is run annually at Ag Show in Toowoomba. In 2013 our students won this award with their essay and PowerPoint presentation outlining the benefits of health and welfare in the cattle industry and how we implement them in our cattle programme. The Show Team won a trophy, a perpetual trophy kept on the UQ Gatton Campus, a tour of the UQ Gatton Campus and a cheque for \$500. A worthwhile endeavour! We hope to retain our title in 2014.

This is the first year that we have used South Devons in our showing programme and we look forward to building our relationship with Graham and Heather Lindsay from the 'Athlone' Stud into the future. We have found South Devons to have the perfect temperament for students to work with as they are friendly and patient. A school setting often involves having large groups working with the animals and our steer and bull have adapted to their new found environment perfectly. As we are planning on taking the steer through to a hoof and hook competition, we were looking for a breed that had a

mild temperament and the ability to yield a high quality carcass – we have found it in the South Devon breed!

We are very thankful to Graham and Heather Lindsay for their continual support and guidance with the cattle and the Show Team – we have a motto here in St George – We are only as good as our support network, and ours is amazing!

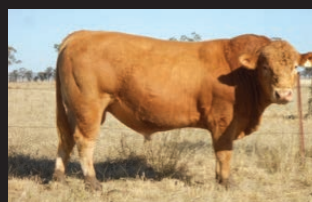
If anyone would like to become a sponsor of our Show Team or simply find out a little bit more and see what we are all about, please feel free to get in touch. You can reach me via email at astua20@eq.edu.au or via the St George SHS (07) 4620 8222.

ASHLEY STUART

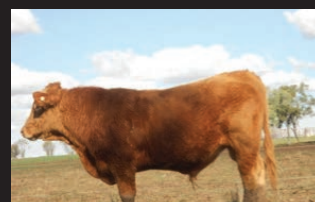
Show Team Coordinator & Agriculture Teacher in Charge

BOLINDA SOUTH DEVON STUD

The Home of Quiet, Feed Efficient, Easy Care, Carcase Quality, Breedplan Recorded South Devons



BOLINDA FAMOUS



BOLINDA HIGHLIGHT

Senior Sires Currently in Use: Alpha C5, Bolinda Famous, Bolinda Flagship, Alpha G35 & Alpha G29
Junior Sire: Bolinda Highlight
Bulls and Females Available for Private Sale

Brian and Elizabeth JAMES

"Derwent Park" 3846 Goolhi Rd Gunnedah NSW
 Phone 02 67435350 or Mobile 0429484288

VISITORS ALWAYS WELCOME

STUD ESTABLISHED 1998

www.bolindasouthdevons.com.au

YOUTH ENCOURAGEMENT AWARD

In 2013 the South Devon Council decided to introduce an award to encourage our young South Devon Breeders.

This will financially assist one or two young people each year to attend a specific event which they may have a desire to participate in. For example, a Royal Show, The SA Heifer Show, Stud Beef Victoria Cattle Handlers Camp, etc. Applications are invited from young persons aged between 15 and 25 years. They must have a background of experience with cattle for at least 3 years, and preferably be a junior member or consider becoming a junior member of the South Devon Cattle Society.

Written applications need to first be sent to the applicant's state branch. Following consideration from the state branch and approval, the application will be forwarded to the Federal Council for consideration and final approval. One third of costs will be met by the applicant, one third by the state and one third by the Federal body. A written quote for expenses needs to accompany the application. All personal expenses are to be met by the applicant. Applications can be received at any time for any event and are to be accompanied by a CV and photos.

Your application must be received by your state branch secretary no later than 31st December for consideration for an event in the following year.

This year, the award is tied in with the Adelaide Heifer Show where a generous offer from David & Rochelle Leese and family "Davelle South Devon Stud" will see the award extended, to include the 'Davelle South Devon Experience'. Young member, Sarah Peters from Queensland is one recipient who will also have the opportunity to spend some enjoyable time at the Davelle stud prior to the Heifer Show. We thank David & Rochelle and family for their generosity and commitment to encouraging our youth. Ryan Bajada, a young Victorian member is the second recipient of the South Devon Encouragement Award and he also will attend the SA Heifer Show. He will travel to Adelaide for the 4 day event with a heifer loaned to him by The Bend Stud. We are sure that these two very deserving young people for this award will have a wonderful learning experience and we look forward to hearing more from them and to see some photos upon their return home. Best wishes to both Sarah and Ryan.

LEONIE DALEY
on behalf of SDCSA Council



DAVELLE SOUTH DEVON EXPERIENCE

We invite applications, from Australian and Overseas South Devon enthusiasts aged between 8 and 23 to apply for the **"Davelle South Devon Experience"** provided by David and Rochelle Leese.

Applications Forms are available from www.davelle.com.au

For further information please contact David or Rochelle Leese (08) 86641702

The successful applicant will be entered into the SA Junior Heifer Expo, held over 4 days at the Adelaide Show Grounds in the second week of the July South Australia School Holidays. This Expo sees up to 200 entries, representing many breeds, with a very informative program and a great opportunity to meet other beef cattle enthusiasts, arguably the best youth cattle event in Australia. For more information on the Expo just visit www.jhe.sabeef.com.au

David and Rochelle Leese "Davelle", will pay for entry fees, the preparation and delivery of a South Devon heifer or steer for use at the Expo. We can also supply bedding and other requirement if necessary for the applicant.

If time permits, we'll host the applicant for a few days after the event and arrange visitation to other South Devon breeders.

We will work with the applicant with their transport requirements. Transport assistance is being offered by the South Devon Cattle Society of Australia to the successful applicant.

APPLICATIONS CLOSE ON THE 31ST MARCH OF EACH YEAR

DAVELLE SOUTH DEVON EXPERIENCE

THE 2014 RECIPIENT IS SARAH PETERS FROM CONONDALE QUEENSLAND.

Sarah landed in Adelaide on the 9th July on one of the coldest winter days in recent times. This was the first time Sarah had travelled by plane and had a bit of turbulence to get the nerves going, together with her grandma and auntie. Thursday they looked around Adelaide and spent time at the Adelaide Zoo. Then Thursday night made it to Jamestown.

Friday Sarah met her steer Davelle Ray and spent time with him and helped another girl who is using one of the Davelle heifers at the SA Junior Heifer Expo.

Saturday, Sarah attended her first game of AFL at the picturesque Wirrabara Oval. After much rain for the week, the track getting into the oval was a bit hairy. After an explanation of the game, Sarah was still a bit confused in what was going on, that's our AFL.

Saturday afternoon finally saw some sunshine and a great time helping feeding cattle and looking at the Davelle herd. Sunday was busy packing and getting organised.

Monday morning we travelled to Adelaide with the 2 heifers and Sarah's steer. The hustle and bustle of the SA Junior Heifer Expo has started.

Tuesday was the education program with some very good presenters. Wednesday morning was Junior Judging and in the afternoon animals were judged. Sarah prepared Ray very well, unfortunately no placing, interestingly the judge commented Ray was too fat?!!

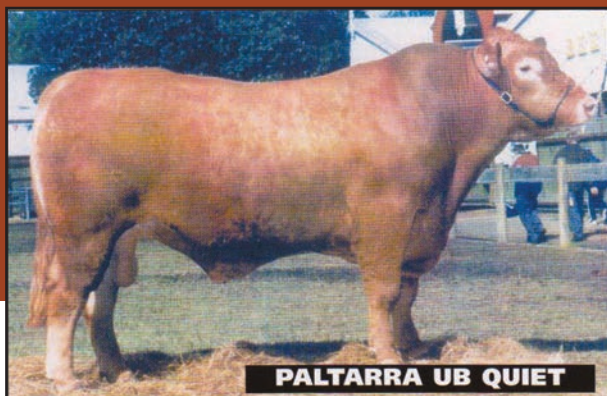
On Thursday it was Junior Handlers. Sarah competed in the Inters and came 2nd in her class a very good and competent job. Sarah was quite impressed with the event, the highlight being the "food". Sarah flew home to QLD on Friday to continue her year 12 studies. We were very proud of Sarah's efforts and we wish her well in her future.

The Davelle South Devon Experience is now open for entries. Please visit www.davelle.com.au for details and entry form.



PALTARRA SOUTH DEVONS

Paltarra South Devons continue to meet and exceed industry standards



Kaye Arnold

Paltarra South Devons

RMD 1595 The Range via Willunga, SA 5172

Ph: 0417 863 071

Em: paltarra@activ8.net.au





SCOTT NIX

When Scott Nix took over his father Keith's farm in 2007, it was a joint decision to increase their cattle numbers. Their 2000 acre Boyup Brook farm had previously ran mostly sheep, but had also been home to a smaller number of South Devon cattle.

In the seven years since then, the young single farmer has increased his herd to 425 breeders including next year's first calvers, and a total of 810 purebred South Devons, making him possibly the largest commercial breeder of South Devon cattle in WA.

Having used all the bloodlines in WA, he has started buying bulls from the Eastern states, recently acquiring 8 bulls from Davelle South Devons in South Australia.

In the past, Scott and Keith have tried cross-breeding, using Red Angus and Murray Grey bulls over their breeders, but soon returned to a pure South Devon herd.

Scott has an independent agent assess and cull from the herd in order to keep an objective eye on the traits that are being bred, but favours animals that are well muscled with less fat, and have a quiet temperament.

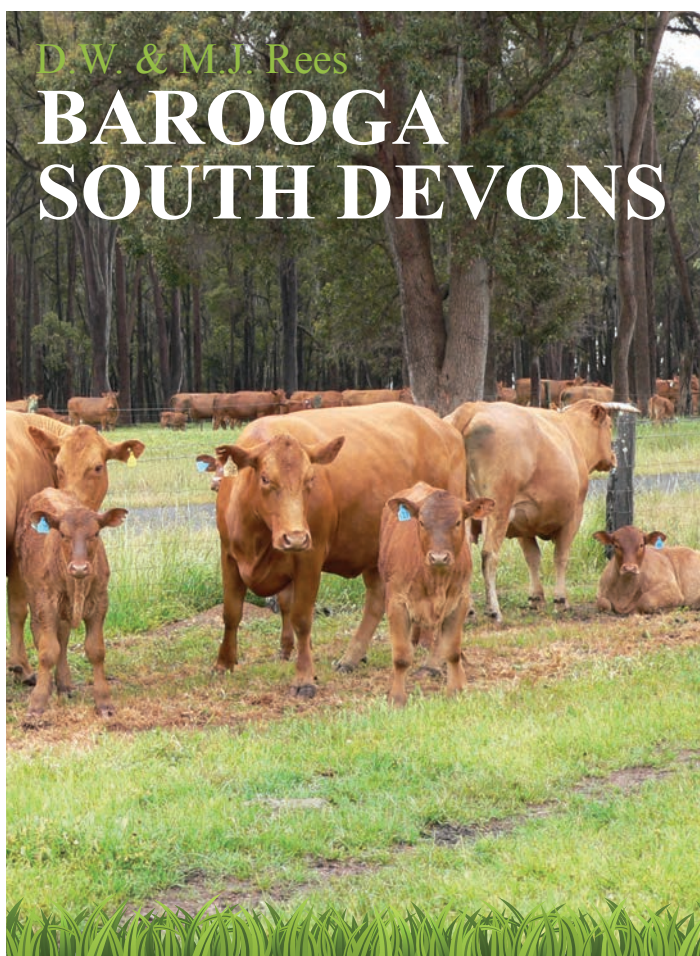
“ For me to go and select an animal, I’m too close to it.” Scott said. “You may keep a trait going in to the breeding line which the agent or someone else can see should be chunked out. ”

The calves are weaned from the beginning of November, after which some are grass fed and some go into feedlots before being sold through Auction Plus.

Scott is cautious about the future, saying that prices for West Australian beef are too low when compared both nationally and internationally.

“In a way, it’s got to change for the beef industry, since it’s been the lowest prices since the eighties.” He said. “People are buying abattoirs and that has perked the interests up, but you’ve got to wait and see what happens.”

The farm, then owned by Scott’s grandfather, was the third to be cleared in the Boyup Brook Shire, and has run South Devon for over 40 years.



M. Rees: (08)97341240
Email: baroogasd@gmail.com



RICHARD CREEK LONG TIME SOUTH DEVON SUPPORTER

South Devon cattle have always been a big part of Richard Creek's farming program, alongside the sheep and cropping enterprises.

He and his son Ben farm in Boyup Brook on 1360ha of land, which he bought 35 years ago after emigrating from England.

Today, he runs 200 purebred South Devon breeders, which he has carefully raised over the years. He also runs a mob of 40 South Devon cross Black Angus breeders.

The herd is mainly mated to South Devon bulls, which Richard has started buying from interstate to acquire new bloodlines. He is very selective when choosing bulls, only buying BreedPlan registered bulls, and carefully choosing traits to breed in. He has recently started trying to put more fat on the cattle to maintain them through the Winter months, and is always aiming for breeders with good milking ability which can produce strong, healthy calves.

“ More abattoir opportunities in the state on top of less numbers, hopefully can only do one thing and that is to increase cattle prices, he said. ”

Richard has many reasons for his passion for South Devons, including their docile nature, higher carcase weight, mothering ability and cross-breeding qualities. But the most important factor to Richard is their growth rate.

“In trials in the United Kingdom and in America and also some bull trials a few years ago down here in Australia, the South Devons excelled in growth rate per day and also in food consumption. They had a very low food consumption index per day”, he said.

Last year, two thirds of their calves were sold straight into weaner sales, while another third was put into feedlots for about 60 days and later sold to Coles. Some of them were putting on weight at an average of two kg per day.

His son Ben, who has a diploma in commercial agronomy, uses his knowledge in the pasture and feed program.

Richard said there is more optimism in the cattle industry than there has been for some time.



SOUTH AUSTRALIAN RETIREMENT

Editor I am including this wonderful letter from a retiring member in South Australia, Colin Michelmore, which was sent to the Federal Council and I believe worthy for all to read.

“I am sending you this letter to inform the Society that we have sold our farm and we are now living in Mt. Barker, S.A. Just a house block, so no room for South Devon animals. So I am sad to say we will resign as members.

We started breeding South Devons in 1985 while we were still running our dairy farm. In June 1990 we stopped dairying and concentrated on breeding South Devons. What wonderful animals they were, so docile and this made them easy to handle. It has been a pleasure to have been a member of the South

Devon family, attending the centenary of the breed in England in 1991 and America 1994. I acted as a steward at the Adelaide Show for 11 years.

As my wife has health problems, we decided to move into Mt. Barker, where doctor and hospital are nearby and I will be 83 in 4 months' time. I know we will miss the farm and South Devon cattle but life must go on and things change.

SOUTH DEVON BULLS WITH SEMEN AVAILABLE

NAME OF BULL	CONTACT NAME	PHONE	OWNER'S EMAIL	COUNTRIES COLLECTED FOR
Alpha Errol Z7	Ian MacGregor	(03)63973328	glenstrae4@bigpond.com	Australia
Burtergill Harry 815 (imp. NZ)	David Leese	(08)86641702	info@davelle.com.au	Australia
Davelle UB Righton H26	David Leese	(08)86641702	info@davelle.com.au	Australia, USA, Canada, South Africa, New Zealand
Gadara Poll Zion	Lois Dupleix	(03)55938282	lois@tca-online.com.au	NZ, Canada, N. & S. America, S. Africa, Australia
Glenstrae Bonaparte	Semex Aust.	(03)97430344	semex@semex.com.au	Australia
Glenstrae Erskine	Semex Aust.	(03)97430344	semex@semex.com.au	Australia
Glenstrae MacAlister X6	Semex Aust.	(03)97430344	semex@semex.com.au	Australia
Glenstrae Ythan	Semex Aust.	(03)97430344	semex@semex.com.au	Australia
Gum Hill Medium Red E530	Glan Lines	(08)88934028	lgumhill@bigpond.com	Aust, USA, S. Africa
Kildare Cadman	Rick McDouall	(02)67827245		Australia + export (non EU)
Kildare Carlos	Rick McDouall	(02)67827245		Australia
Lilyville Connor	Semex Aust.	(03)97430344	semex@semex.com.au	Australia
MJB United 333U (imp. USA)	David Leese	(08)86641702	info@davelle.com.au	Australia
Paltarra General	Kaye Arnold	(08)85567396	paltarra@activ8.net.au	Australia
Paltarra Ubquiet	Kaye Arnold	(08)85567396	paltarra@activ8.net.au	Australia
The Bend Black Enough	Chris + Leonie Daley	(03)56648369	thebend.sd@skymesh.com.au	Australia
The Bend Easyrider	Chris + Leonie Daley	(03)56648369	thebend.sd@skymesh.com.au	Australia
The Bend Gently	Chris + Leonie Daley	(03)56648369	thebend.sd@skymesh.com.au	Australia
Thowra Downs Romany	Chris + Leonie Daley	(03)56648369	thebend.sd@skymesh.com.au	Aust,NZ,Canada, N+S America, S. Africa
Torr Down Hermes 3	John + Sue Harvey	(03)54241001	jsharvey@torrdown.com.au	Australia
Torr Down Marvel 3	John + Sue Harvey	(03)54241001	jsharvey@torrdown.com.au	Aust,EU, NZ, Canada, N+S America, S. Africa

NOTE: The bulls listed above belong to South Devon members.
Please visit our website to view all bulls available within Australia in artificial breeding.



MCUTCHEN FAMILY

This is a story on a family that is quietly out there with their South Devon cross cattle, competing in led steer classes and carcase competitions.

Who is the McUtchen family? The McUtchen family is Dad James, Mum Kathryn, children Rory 4, Callum 2, and Alannah 9 months.

Describe your farming enterprise – what is the mix – cropping, cattle etc.?

We have 926 acres of mixed farming 38km North East of Murgon in the South Burnett area of Queensland. We run 120 head of breeder cattle, have a 4000 unit contract grower piggery, and grow approximately 120 acres of forage crop - usually oats in winter and summer forage.

How long have you been involved in showing/carcase competitions and what gave you the initial interest in these competitions?

James and his family started showing in 1992 with one led steer to see how their cattle compared with other peoples. We now regularly compete in a number of local shows; Toowoomba and Brisbane Royals, and the Callide Dawson Carcase Competition. Showing is a family activity with both James and Kathleen showing the cattle, and the boys just starting as they are now just about big enough!

What qualities do you look for in the cattle you enter into these competitions?

Initially the calf must catch your eye, if it is intended for a led competition. It needs that 'look at me' quality. While prime and carcase cattle may be just a little behind show cattle in eye catching appearance, they need to have similar, good conformation.

How do you choose which beast will make the grade?

The steer must have good thickness through the topline for carcase competitions. It must have the conformation that will support excellent muscling, and must also have the ability to gain the right amount of weight in the required time span to meet the class requirements. In show cattle (led steers) we look for length of body, depth, thickness through the top and good hindquarters, plus the overall 'look at me' factor that will attract the judge's eye.

What does the South Devon breed offer you in relation to these competitions and your beef enterprise in general?

We use a South Devon bull over Euro cross females as we feel that gives us the best combination of muscle (from the Euro), fat coverage and carcase qualities (from the SD). We initially got into South Devons as we needed a bull, were told about some South Devons that were for sale, decided to give one a try, and still have him. Because we are in ticky country, our preferred mix of breeds is probably the South Devon/Brahmousin cross, but we have also had good success with the South Devon/Murray Grey cross as well.



“ The future of the beef industry is in the hands of the youth, so that area should definitely be targeted. High Schools are a good place to start, as are Youth Shows and Camps ”

We also run a small Belgian Blue stud – James and his family saw them when they were on holidays in the UK and Europe many years ago and started a small stud shortly after returning home.

How do you prepare your cattle for these competitions – (without giving away any secrets) – is there a special regime of feeding or does the choice of animal mean they don't need special treatment?

We usually provide our steers with access to grain from an early age, if they are intended for any form of competition. Those destined for grain fed competitions usually have a 120 day feeding regime, while those aimed at the Grassfed competition are kept on good green feed.

What are some of your biggest successes in both the led steer and carcass competitions?

- 2007 - Bell Show; Champion
- 2008 – Cooyar Show; Reserve Champion (2nd in class)
- 2008 – Toowoomba Royal Show; Grand Champion Led Steer
- 2008 – Callide Dawson Carcass Competition; Champion Grassfed Led Steer
- 2008 – Brisbane Royal; Champion Heavyweight Carcass and 1st in Class 8
- 2008 – MSA Ekka Eating Quality Award
- 2009 – Callide Dawson Carcass Comp; Grand Champion Carcass, Champion Grassfed and 1st Trade Steer or Heifer
- 2009 – Blackbutt Show; Reserve Champion
- 2010 – Callide Dawson Carcass Comp; Reserve Champion Grassfed Carcass
- 2010 - Toowoomba Royal; Reserve Champion Middleweight Steer
- 2011 – MSA Ekka Eating Quality Award
- 2012; Brisbane Royal; 1st in Class 5 Carcass
- 2014 – Blackbutt Show; Champion Led Steer or Heifer.

We have also had the largest eye muscle at the Ekka since 2007.



What are your thoughts on South Devon cattle and can you offer suggestions to make them more visible in the beef show world?

We will continue to use South Devons in our breeding programme as they are giving us very good females, and good saleable steers and heifers.

Perhaps prize money could be offered at major competitions (Ekka, Toowoomba, Callide Carcass Comp etc) for South Devon and South Devon cross broad ribbon winners as incentive.

The future of the beef industry is in the hands of the youth, so that area should definitely be targeted. High Schools are a good place to start, as are Youth Shows and Camps. Some other breeds offer a heifer as an incentive prize for the best performer at these.

QUEENSLAND ENTHUSIASTS

Alan and Julie Hasthorpe live in the beautiful Mary Valley in Queensland and purchased their first 12 head of Hereford cattle in the mid 70's and in the 80's introduced a Limousin bull. Later purchasing 20 pure Limousin cows they became a small stud, with one of their steers winning grand champion led steer at the Brisbane exhibition in 400 to 500kg range.

With these cross breeds they found cattle ticks to be a problem and so introduced a Braham bull and in conjunction with their bio-dynamic practices they were able to produce beautiful cattle with good temperament and milk production and minimal ticks.

After purchasing 200 acres, again in the Mary Valley they were introduced to the South Devon and purchased some cows and the softness of the progeny won them over. Entering in the Gympie Carcass Classic hoof and hook competition they placed in the top 4.

To improve the marbling throughout their herd they introduced a South Devon Bull purchased from Bill and Margaret Newton in 2003 and their 2nd Bull in 2009 and now are looking to purchase their 3rd South Devon bull for the upcoming season.

They are very happy with their herd now consisting of over 200 head of cattle with the majority being South Devon cross. Their cattle are in demand at the local feed lots for their temperament and do ability and are sold as vealers. When the local agent came looking for this year's feed lot steers he was surprised with the weight of



the South Devon steers in comparison to Charbray and Droughtmaster cattle. Selecting more South Devons than Charbray.

For the last 3 years the Maleny High School have purchased a steer for their interschool hoof and hook competition and have placed 2nd and grand champion, with the prospect of entering one in the Brisbane Exhibition Hoof and Hook this year as well as their interschool competition, they look forward to this year's results.

Alan and Julie are happy with this 3 way cross and find the softness, temperament and fertility of the live animal and flavour and texture of the meat to be the main attributes.

What more could you want?

‘FROM LITTLE THINGS BIG THINGS GROW’



Athlone Gordon was 540 kg at 9 months and is now 1000 kg at 34 months

Athlone South Devons

Graham & Heather Lindsay
P.O. Box 390 Roma Queensland 4455
0428 630 711 / 0427 830 711



BLACK, RED AND COMPOSITE
COMMERCIAL SOUTH DEVON CATTLE



merilba

HOME OF THE SOUTH DEVON

John & Annette Cassidy

Tel: +61 2 6778 9126

Fax: +61 2 6778 9106

email: merilba@activ8.net.au

Peter & Deidre Gosper

Tel: +61 2 6778 9121

email: gosaok@activ8.net.au

Kingstown Road via Uralla
NSW 2358 Australia



ATHLONE SOUTH DEVONS

ATHLONE SOUTH DEVONS IS CURRENTLY UNDERGOING A PROCESS OF REVIEW AND EVALUATION TO DETERMINE OUR EXACT DIRECTION INTO THE FUTURE.

Following the sale of our property last year, we have reduced our commercial numbers significantly and are currently deciding whether we go forward with half commercial and half stud cows, or whether we concentrate on the stud, or more likely, reduce the stud to approximately 20 top class females and continue with our commercial females. Heather's particular favourites are the Brahman x South Devon females, while Graham leans more towards the Droughtmaster/Santa cross.

We know that Qld cattlemen want sleek coats on their cattle, and we'd like to try a number of different crosses of South Devon/Euro/Tropical breeds to see if there is a consistently brilliant cross suited to the bigger properties in the north and west of the State.

We have a couple of calves on the ground by Athlone Gordon - he is proving to be as good a sire as we hoped, and he will be used over the stud cows this coming season. His temperament is excellent - he hadn't had a halter on him for at least 18 months until 17th June, when we moved him to Roma.

We caught him and led him about 800 metres to his new paddock (with our 4 young bulls following along behind like ducks in a row) - confirmation of the wonderful temperament we value so highly.

Our commitment to the breed hasn't changed; we still believe South Devons are way under valued by the cattle industry as a whole and look forward to working with the rest of the members to promote our wonderful cattle.



BETTER BULL SELECTION

Using South Devon Selection Indexes

The major influence that beef producers have on the genetics of their herd is through the bulls that they select for use within their breeding program. Selecting bulls with the best genetic package for their operation represents a powerful opportunity to significantly improve the future profitability of their beef enterprise.

The bulls selected not only have a large influence on the performance of the calves produced by the enterprise in the following few years, but in self replacing operations, their daughters influence the performance of the herd for many years to come. In effect, 87.5% of the genetic composition of the calves produced is determined by the sires used in the past 3 generations.

Importantly, beef producers have a range of information to assist them with bull selection and purchase decisions. One such piece of information are selection index values.

Selection indexes are utilised by livestock breeders around the world, across many species, and aid in the selection of animals for use within a breeding program where there are several traits of economic or functional importance. Selection indexes provide an overall "score" of an animal's genetic value for a specific purpose and are calculated based on weightings placed on individual traits that are deemed to be important for that purpose. Selection indexes enable beef producers to make "balanced" selection decisions, taking into account the relevant growth, carcase and fertility attributes of each bull to identify the animal that is most profitable for their particular commercial enterprise. Selection indexes reflect both the short term profit generated by a bull through the sale of his progeny, and the longer term profit generated by his daughters in a self replacing cow herd.

In the Australian beef industry, selection indexes are calculated for all the major breeds, including South Devon. The selection indexes for South Devon have been developed by South Devon Cattle Society of Australia and are designed to cater for the commercial market production systems of general relevance to the South Devon breed. The selection indexes are calculated using a software package called BreedObject which combines the BREEDPLAN EBVs for an animal with an economic weighting (based on costs of production and returns on outputs), to produce a single value of an animal's overall genetic value. Different selection index values are calculated for the same animal for different production systems and market end points.

Using South Devon Selection Indexes in Bull Selection

As a guide to using selection indexes when selecting South Devon bulls for use within a breeding program, it is recommended that producers, both seedstock and commercial, complete the following steps:



- (i) Identify the selection index of most relevance
- (ii) Rank animals on the selection index
- (iii) Consider the individual EBVs of importance
- (iv) Consider other traits of importance

1. Identify the Selection Index of Most Relevance

The first step when using selection indexes is to identify the index that is of most relevance to the particular production system in which the animal is going to be used. For seedstock producers, this may be the production system of their bull buying clients.

There are three different selection indexes calculated for South Devon animals. A brief description of each index is provided below.

Vealer Index - Estimates the genetic differences between animals in net profitability per cow joined for an example commercial herd targeting vealer production. Vealers are finished on grass and are marketed at 320 kg live weight (180 kg HSCW and 4 mm P8 fat depth) at 10 months of age. Daughters are retained for breeding. No marbling is required.

Supermarket Index - Estimates the genetic differences between animals in net profitability per cow joined for an example commercial herd targeting the domestic supermarket trade. Steers are either finished on grass or grain (e.g. 70 days). Steers are marketed at 450 kg live weight (250 kg HSCW and 12 mm P8 fat depth) at 15 months of age. Daughters are retained for breeding. A small premium has been placed on marbling.

Export Maternal Index - Estimates the genetic differences between animals in net profitability per cow joined for an example commercial herd targeting the production of steers for the export market being finished off grass or through a mid-fed feeding program (e.g. 125 days). Steers are assumed marketed at 600 kg live weight (330 kg HSCW and 20 mm P8 fat depth) at 24 months of age. Daughters are retained for breeding. In response to industry feedback regarding eating quality and tenderness, a small premium has been placed on marbling.

Further information regarding each of these indexes is available from the Tip Sheets page in the Technical area of the BREEDPLAN website (<http://breedplan.une.edu.au>). From the home page, click "Technical" then "BREEDPLAN Tip Sheets" and scroll down to the section titled "Interpreting Australian South Devon Indexes".

May 2014 South Devon GROUP BREEDPLAN																	
Name/ID	Gestation Length (days)	Birth Wt (kg)	200 Day Wt (kg)	400 Day Wt (kg)	600 Day Wt (kg)	Mat Cow Wt (kg)	Milk (kg)	Scrotal Size (cm)	Carcass Wt (kg)	Eye Muscle Area (sq cm)	Rib Fat (mm)	Rump Fat (mm)	Retail Beef Yield (%)	IMF (%)	Vealer Index (\$)	Supermarket Index (\$)	Export Maternal Index (\$)
ACE F1	-1.8 53%	+0.7 82%	+24 77%	+29 73%	+31 73%	-	+3 46%	-	-	+1.7 47%	+1.8 57%	+2.4 57%	-0.5 54%	+0.7 46%	+\$ 40	+\$ 47	+\$ 55
ALPHA D37	-2.3 59%	-1.8 88%	+13 81%	+23 79%	+34 80%	-	+2 57%	+0.6 77%	-	+1.7 55%	+0.2 66%	+0.2 66%	+0.8 63%	+0.3 58%	+\$ 32	+\$ 43	+\$ 58
ACE C5	-2.2 60%	-1.6 87%	+11 85%	+17 81%	+25 81%	-	+7 59%	+0.9 75%	-	+2.9 53%	+0.4 64%	+0.5 64%	+1.3 61%	-0.1 55%	+\$ 34	+\$ 39	+\$ 51
ALPHA F2	- -	-0.8 75%	+15 75%	+18 72%	+31 72%	-	+10 45%	+0.6 71%	-	+2.0 47%	+0.3 56%	+0.4 56%	+0.9 53%	+0.2 45%	+\$ 34	+\$ 37	+\$ 52
ACE E6 (ET)	-1.2 57%	+0.1 82%	+17 78%	+19 77%	+25 77%	-	+2 57%	+0.1 69%	-	+1.3 51%	+1.4 61%	+2.0 61%	-0.4 58%	+0.4 51%	+\$ 32	+\$ 36	+\$ 46
ALPHA Z10	-2.3 65%	-1.1 90%	+18 88%	+27 87%	+21 87%	-1 74%	+3 64%	+0.5 76%	-	+2.5 57%	-0.7 70%	-0.9 70%	+2.1 67%	-0.8 63%	+\$ 31	+\$ 32	+\$ 30
DAVELLE ALPHA BEAU E17	-0.5 53%	+0.1 78%	+11 79%	+28 76%	+39 76%	-	+3 57%	+2.3 70%	-	+1.5 45%	-0.7 55%	-0.9 55%	+1.0 52%	0.0 47%	+\$ 19	+\$ 30	+\$ 44
ACE Y8 (AD/ET)	-1.1 71%	-0.1 89%	+12 86%	+21 83%	+28 83%	+18 77%	+3 81%	+0.3 69%	-	+1.5 55%	+0.1 67%	+0.1 67%	+0.5 65%	+0.3 61%	+\$ 21	+\$ 30	+\$ 39
ALPHA D2	-1.0 61%	-0.8 86%	-3 83%	+5 81%	+3 81%	-	+1 58%	+0.7 71%	-	+2.8 51%	+1.5 62%	+2.0 62%	+0.2 59%	+0.5 52%	+\$ 14	+\$ 28	+\$ 31
ALPHA C5	-1.0 65%	-1.5 91%	-1 88%	+9 84%	+10 84%	+5 75%	+2 60%	+0.9 77%	-	+0.5 57%	+0.7 68%	+1.0 68%	-0.3 65%	+0.4 60%	+\$ 13	+\$ 26	+\$ 31
DAVELLE D51 REWARD G16	- -	+0.7 77%	+12 76%	+21 71%	+28 71%	-	-1 42%	+0.9 66%	-	+1.9 42%	+0.1 54%	+0.1 54%	+0.4 50%	0.0 43%	+\$ 15	+\$ 23	+\$ 32
MERILBA V51	-4.7 71%	0.0 90%	+18 85%	+17 81%	+28 80%	-	+2 72%	-	-	-	-	-	-	-	+\$ 25	+\$ 21	+\$ 32
DAVELLE ALPHA REGAL E28	-0.1 55%	+0.7 73%	+12 76%	+16 74%	+30 74%	-	+8 63%	+0.3 73%	-	-1.9 50%	+0.3 60%	+0.4 60%	-1.1 58%	+0.6 53%	+\$ 15	+\$ 19	+\$ 32
ALPHA ERROL Z7	+0.8 58%	+4.3 79%	+29 77%	+40 75%	+53 75%	-	+6 61%	+2.1 70%	-	+2.3 52%	-0.6 63%	-0.9 63%	+1.8 60%	-0.4 55%	+\$ 20	+\$ 19	+\$ 31
MERILBA W042 (AD)	-2.8 82%	+2.9 96%	+26 94%	+32 93%	+44 93%	-	-3 85%	-	-	+0.4 57%	+0.2 70%	+0.3 70%	-0.1 68%	+0.1 64%	+\$ 18	+\$ 19	+\$ 32
Breed Avg. EBVs for 2012 Born Calves	-0.5	+1.2	+12	+20	+27	+29	+1	+0.5	+17	+0.5	-0.2	-0.2	+0.3	+0.0	+14	+17	+23



Within this area, further details are provided such as the relative emphasis that is being placed on each EBV in the calculation of the different selection indexes, and the expected change in each individual trait if animals are selected based on the different selection indexes. Information is also available regarding the indexes that are calculated in other breeds.

If the standard selection indexes are not relevant to their operation, beef producers also have the ability to develop a customised index using herd-specific production information and marketing goals. Further information regarding the development of customised indexes can be found on the BreedObject website (www.breedobject.com).

Identifying the selection index of most relevance to the production system that the bulls will be used in is of utmost importance. Using the wrong selection index will potentially compromise any subsequent selection decisions that are made.

2. Rank Animals on Selection Index

Once the selection index of most relevance has been identified, the bulls available for selection should then be ranked on that particular selection index. An example of this is provided below, where a group of Published Sires with semen available within the South Devon breed have been ranked in descending order on the Supermarket Index.

When ranking bulls on a selection index, producers should note:

- Selection indexes cannot be used to rank animals across breeds. As with EBVs, the selection indexes for animals of different breeds are calculated in different evaluations and consequently, selection indexes can only be used to compare bulls with other animals of the same breed.
- Producers can use selection indexes to see where a bull ranks compared to other South Devon animals by comparing its selection index value to the current breed average value and to the percentile table. For example in the above example, comparison to the breed average value listed at the bottom of the table of +17 indicates that all sires are expected to have genetics that are more profitable than the current genetic level of the breed if used within this production scenario.

Current breed average and percentile table information for each selection index should be available from sale catalogues or can be accessed from the online database facilities offered via the South Devon Cattle Society of Australia website.

3. Consider Individual EBVs of Importance

While Selection Indexes combine all the available EBV information to provide an indication of a bull's overall genetic merit, it is still very important to pay attention to the bull's individual EBVs for traits of particular importance.

For example, producers may pay attention to:



- Calving Ease EBVs if they are planning to use the bull over heifers
- Fat EBVs if they require more or less fat on their steers at slaughter
- EMA EBVs if they want to specifically improve the muscling in their herd

One simple way of considering a bull's individual EBVs, is to set acceptable ranges for the individual EBVs of particular importance. Bulls should firstly be ranked on the selection index of relevance but then any animals whose individual EBVs fall outside of the acceptable range be excluded from selection.

4. Consider Other Traits of Importance

While selection indexes take into account all the available performance information on an animal, it is also important to recognise that they do not consider all the traits of functional and economic importance. Consequently, when using selection indexes to assist with bull selection, it is important to also consider other information that may not be accounted for in the index but is important within the breeding objective. For example, this may include such things as assessment of a bull's temperament, structural soundness, bull fertility information, carrier status for any relevant genetic disorders and DNA results for qualitative traits like polledness.

One strategy that can be used to incorporate selection for these other traits of economic and functional importance with the animal's EBV and selection index information is to firstly rank animals on the selection index of relevance, exclude any animals whose individual EBVs fall outside of an acceptable range and then assess the animals for these other traits of importance, excluding any animals from selection who are not acceptable in each area.

Using selection indexes in this manner will enable beef producers to make the most informed bull selection decisions and provides the best possibility of maximising the value of the genetics that are introduced into the beef operation.



For further advice regarding the use of selection indexes in bull selection, please contact Gemma Wilkinson at Southern Beef Technology Services on 0459 823 067.



SOUTH DEVON GRACING ADELAIDE'S RESTAURANTS

David and Rochelle Leese have been supplying South Devons to Richard Gunner Fine Meats for 4 years now and have developed a great relationship, learning much more about the beef supply chain.

It has taken a few years to get the systems right in supplying the animals Richard wants but when they hit the mark, the rewards both monetary and satisfaction are great.

“ You’re very proud when going into a restaurant and seeing South Devon on the menu. ”

The South Devons Richard is looking for are preferably females but he will take steers, which have been very well finished at a minimum of 18 months of age, “fat equals flavour and the older the animal is the more depth of flavour you get. Carcasses are dry aged for up to 90 days, so a good fat cover is needed, but the results are amazing”.

This exposure has been of great benefit. A new client ordered the South Devon at a restaurant, was extremely impressed and ended up buying animals at Davelle’s auction to complement their vineyard business in the Barossa Valley.

Richard Gunner was a guest at the Davelle’s Field Days in Feb 2014, which was a great opportunity for Richard to talk to clients and visitors about the supply arrangements and the animals he is looking for. Come lunchtime, he made a pretty handy BBQ chef! The day was a great success with visitors seeing the merits of South Devons both in the yards and available supply arrangements.

The South Devon is taking on the other breeds, maybe not in numbers, but for quality and the overall eating experience which is the South Devon advantage.

The future is bright for South Australian South Devon Breeders who want to supply this market.

TORR DOWN

Now well & truly into the twilight of their farming careers, John & Sue Harvey are still just as motivated as ever, not only in promoting their Torr Down South Devons, but also the breed in Australia, as well as world wide .

The last twelve months has witnessed Torr Down Hallmark 10 sire the Grand Champion Carcase at The Royal Melbourne Show , for the second year in succession.

Not to mention, being an integral part of the team winning the prestigious Borthwick Trophy, a first ever for the breed. All credit to Kirndeene South Devons , & Billabong High School. This follows a Torr Down Hermes 3’s son, winning the Grand Champion carcase award at The Royal Adelaide Show in 2011.

Internationally, Torr Down Marvel 3’s semen has been exported to New Zealand & the U.K.,as well as frozen embryos from three Torr Down heifers.

TORR DOWN SOUTH DEVONS

STILL GOING PLACES



TORR DOWN MARVEL 3 HOMOZYGOUS POLL

Sons and daughters, occasionally for sale
Together with other select torr down genetics.

John & Sue Harvey
P.O. Box 23, Trentham, Victoria 3458
Em: jsharvey@torrdown.com.au Ph: (03) 5424 1001
www.torrdownsouthdevons.com.au

GREEN AND GOLD MALARIA

BY RUPERT MCCALL

MANY THANKS TO TOM LOCKIE FOR THIS POEM.

The time would soon arrive when I could not accept the rash
I was obviously ill, so I contacted Doctor Nash;
A simple consultation would abdicate my fate.
So I walked into the surgery and gave it to him straight.

Doc., I wonder if you'd look at this allergy of mine.
I get these pins and needles running up and down my spine.
From there across my body, it would gradually extend,
My neck would feel a shiver and my hair would stand on end.

Well. The Doctor scratched his melon with a rather worried kind of look.
You have some kind of fever and it's hard for me to say
When is it that you get this strange condition?
Well I thought for just a moment, and gave him my position.

I get it when I'm standing in an ANZAC Day Parade and when I hear the National Anthem is being played.
I get it when Meninga makes a kiwi crushing run or Border grits his teeth for a really gutsy ton.
I get it when Banjo takes me down the Snowy River, or Matilda takes me waltzing with a billy boiling shiver.
I get it when Sydney was awarded with the Games. I get it when I hear the farmers fighting for their names.

I got it when Bertram raised the Boxing Kangaroo, and when Perkins smashed the record
The rashes were true blue: So tell me Doc, am I really going to die?
Well he fumbled with his stethoscope and pushed it out of reach.
He thought for just a moment then he gave this stirring speech:

From the beaches here in Queensland to the rolling shores of Broome
To the harbour shores in Sydney where the Waratahs in bloom
From Uluru at sunset to the mighty Tasman Sea
From the Adelaide cathedrals to the mighty M.C.G.
From the Great Australian Bight to the Gulf of Carpentaria
The medical profession call it Green and Gold Malaria:

But forget about the text books, the truth I cannot hide
What you have contracted is Good Old Aussie Pride.
You were born with it, and one thing is for sure
You will die with it young man, because there isn't any cure.



Garth Huppatz, Lois Dupleix, Julie MacGregor with Ron at Tesbury during the 2011 World Tour.

Happy Birthday!

Ron May turns ninety on the 21st October. Ron has been linked to the South Devon breed for forty years, being the Husband of Kath May, the founder of the Tesbury South Devon Herd and Father of the present Principal, Lois Dupleix. *Many Happy returns Ron.*

NEW WEBSITE COMING SOON

VALE - IAN DOWNIE

It is with much sadness that I announce the death of Ian Keith McDowall Downie OAM

Ian was an early member of the fledgling South Devon Society, joining in 1973. He purchased bulls from the Taheke Stud in New Zealand and followed up over the next two decades bringing in another 15 bulls from around Australia.

Ian Downie held positions with the Tasmanian branch and represented his State on Federal Council. He became Federal President and at the end of his term, left the Society in a better financial position than when his tenure commenced. Ian Downie was instrumental in organising the visit of Jim Leachman to Australia, travelling with him to all States where he spoke at 23 meetings. He was also instrumental in moving the South Devon Federal office to ABRI, employing Richard Apps as Executive Officer, the two of them visiting every State during Ian's presidency. He also changed the format of Federal Council meetings to local Government standard with the Executive Officer forwarding his recommendations on every motion to Councillors prior to a meeting, also instigating the rule that Councillors only speak for 5 minutes on each motion. At the 1991 World Conference in England, Ian presented a paper "100 Years of the South Devon Society in England". At the same time he judged the South Devons at the English Royal Show.

Ian also developed his own breed of sheep, the Cormo, and was a Councillor and Warden on the Southern Midlands Council over many years. These are but a few other areas in which he excelled.

Ian Downie was made a life member of the South Devon Society in April 2002. He was a wonderful contributor and benefactor to the Breed.



BREED STANDARD FOR SOUTH DEVONS IN AUST.

COLOUR AND HIDE.

Colour can range from gold through to medium red or solid black. Any white under body is undesirable. No white forward of the navel is allowed. Hide should be loose and pliable.

HEAD.

Head should be adequately broad and marginally long with a gentle eye. Ears set well forward and of a good size. Muzzle should be broad and clear of smutty markings.

BODY

- Shoulders not prominent, blending neatly into a deep body.
- Barrel deep and full in girth. Ribs well sprung, even and extending well back along the spine. Deep in the flank giving a level underline and not an extending gut.
- Back straight with good width extending from behind the shoulders to the loin.
- Hindquarters long, wide and square on top. The rounds should be deep and wide to the hocks.
- The tail should be set level and blend neatly into the rumps. It should be strong with a good brush.

LEGS AND FEET.

Legs should show strong bone, flat rather than round below the hock. The hind legs, viewed from the rear, should be reasonably straight and parallel with the hocks well apart demonstrating a square stance and correct angulation of leg. The forelegs should be straight and set apart but not too wide. All hooves must be sound and uniform, pointing directly forward and attached to strong pasterns.

TEMPERAMENT.

The animal must be docile.

BULLS.

Masculine characteristics with size and flesh to attain 1100 to 1400 kg at maturity. Testicles substantial and of an even size, suspended equally and not twisted.

COWS.

Feminine appearance with good size and even flesh. Even shaped, well attached udder with four well-spaced, even and moderately sized teats.

BREEDING FOR POLLEDNESS

Polledness, or the absence of horns, is an important trait being actively selected for within many beef breeding programs across Australia. Breeding polled cattle provides a permanent solution to many of the problems associated with horned cattle, including easier handling of stock, reduced bruising, reduced risk of injury to stock handlers, reduced labour costs and reduced concerns regarding the animal welfare issues associated with dehorning.

Importantly, breeding for polled cattle is not as simple as just using visually polled bulls within a breeding program and for this reason, a number of tools now exist that enable producers to transition to a polled herd relatively quickly. One of these tools is the Australian Poll Gene Marker test that was initially released by the Beef CRC in 2010. This DNA based test has recently been greatly enhanced by the CSIRO, with the assistance of funding from Meat and Livestock Australia (MLA), and now has considerably greater accuracy than the previous test.

The Genetics of Polledness

Unlike many traits of importance to beef producers, polledness is a qualitative trait controlled entirely by genetics, with non-genetic factors having no influence on the polled status of an animal. Animals can either be polled, horned or scurred (small horns not attached to the skull), although considerable variation in expression is observed within these three different phenotypes.

The genetics of polledness is thought to be controlled by only a few genes, with the polled gene thought to be located in a region of the animal's DNA on chromosome 1. Two basic alleles (ie. different forms of gene) have been identified for the polled gene, the polled allele and the horned allele, with each animal inheriting two alleles for polledness, one coming from each parent. The polled allele is dominant over the horned allele, so that only animals which are homozygous horned (ie. inherit two horned alleles – referred to as hh) will be horned. Animals that are homozygous polled (ie. inherit two polled alleles – referred to as PP) or are heterozygous polled (ie. inherit one polled and one horned allele – referred to as Pp) will be either polled or scurred.

The scurs gene (Sc) interacts with the polled gene and is only expressed when the poll allele is present (e.g. in animals with the genotype PP or Ph). The expression of the scurs gene is also sex dependant, so that males only need one copy of the scurs allele to be phenotypically expressed (Scsc or ScSc) whereas females need two copies (ScSc).

TABLE1. POSSIBLE PHENOTYPES AND THE CORRESPONDING GENOTYPES FOR POLLEDNESS

PHENOTYPE	POSSIBLE GENOTYPES
POLL	PP, Ph
HORNED	Hh
SCURRED	PP, Ph

The possible genotypes and their corresponding phenotypic expressions are shown in Table 1.

Breeding for Polledness – The Theory

Because animals possess two alleles for polledness, it is possible that their phenotype does not reflect their underlying genotype. For example a polled or scurred animal may be heterozygous polled (Ph), possessing one polled and one horned allele, or homozygous polled, possessing two polled alleles. In scenarios where the polled animal is heterozygous polled, their progeny will on average, inherit a horned allele, rather than a polled allele, 50% of the time.

The effect of this when breeding for polledness is demonstrated in the following scenario where two polled bulls, one being homozygous polled and the other heterozygous polled, are joined to a herd of horned cows.



In the first scenario, a homozygous polled sire (PP) is joined to horned cows (hh) with the resulting offspring all being heterozygous polled, and being all either polled or scurred. If the resulting polled or scurred heifers (i.e. 100% of heifers) are then mated with a homozygous polled sire (PP) then all offspring will also be either polled or scurred, with 50% of them homozygous polled and no longer carrying the horned gene.

By contrast, in the second scenario, a heterozygous polled sire (Ph) is joined to horned cows (hh), with 50% of the resulting offspring being polled or scurred and 50% being horned (hh). If the resultant polled heifers (Ph) are then mated to a heterozygous polled sire (Ph), 75% of the resultant progeny will be either polled or scurred and 25% will be horned. Importantly, only 25% of the progeny will be homozygous polled and no longer carrying the horned gene (PP).

Breeding for Polledness – The Practical

Breeders wishing to increase the number of polled animals within their herd can achieve the desired outcome in a variety of ways, however the pathway chosen will significantly affect both the time taken and the cost that is incurred.

As with other traits, individual sires contribute proportionally more to the genetics of the herd and so careful selection of sires with polled genetics results in the biggest gains. This may involve use of polled bulls as a basic principle, but as the previous scenarios indicate, where available, use of sires that have been identified by a DNA test as being homozygous polled will greatly increase the speed by which a herd can transition to a polled herd.

Breeders who are able to apply a level of selection pressure to their cow herd can also use the same philosophies that have been outlined for bulls. Retaining only polled or scurred females will increase the frequency of polled genes within the herd, while giving priority to polled females that have been identified by DNA test as being homozygous polled will maximise the rate of polled gene introgression into the herd.

Importantly, breeding for polledness should always be balanced with selection for other traits of economic and functional importance within the breeding objective. Simply selecting for polledness without any consideration of other important traits is not recommended as it may potentially compromise the genetics of animals for these other traits.

DNA Tests for Polledness

A number of DNA tests are available that enable breeders to determine whether a polled animal is homozygous polled or heterozygous polled. The precise location of the polled gene has not yet been identified, and so the DNA tests indirectly detect the polled gene though linked gene markers. No markers for the scurred gene have been identified as yet.

The tests currently available are predominantly available through the Animal Genetics Lab (AGL) at the University of Queensland and Zoetis Animal Genetics. Both the AGL and Zoetis Animal Genetics offer the Australian Poll Gene Marker Test initially developed by the Beef CRC, while the AGL also offer tests developed in the United States by GeneSeek (previously Igenity). A number of overseas DNA labs also offer tests in some breeds.

Australian Poll Gene Marker Test

The Australian Poll Gene Marker test was initially developed by the Beef CRC and released to industry in 2010. The initial test was based on a single DNA marker and worked very well in some breeds, but not so well in others.

The test was further developed by the CSIRO, with funding assistance from Meat and Livestock Australia, and a greatly improved test was released in 2013. The improved Australian Poll Gene Marker test uses the same marker as the initial test but also incorporates information from nine other markers close by in the genome. The genotype information from all ten markers is combined to create a 'haplotype' to more accurately track the origin of alleles and associate them with being horned or polled. The additional marker information increases the proportion of animals for which the test returns an informative result, and also increases the accuracy of those results.

KIRNDEEN SOUTH DEVONS

A B R E E D F O R T H E F U T U R E



KIRNDEEN HERCULES H5

BORN: 14 - 04 - 2012

SIRE: DAVELLE AWESOME REG D8

DAM: KIRNDEEN NATALIE I

SCROTAL SIZE: 40CM / P8: 3MM / RIB: 3MM

EMA: 111CM² / IMF: 3.0%

Kirndeens South Devons proud winners of Melbourne show grand champion carcass 2012 and 2014 and part of the Borthwick team 2013.

www.kirndeensouthdevon.com.au

Ph: (02) 6029 7678 Shaun: 0427 261 994 Sheree: 0458 298 787

Em: shaun@3dspecialists.com.au Em: shereehamson@agnvet.com.au

The Australian Poll Gene Marker test can be used with a high degree of confidence across a range of tropical and temperate breeds including Brahman, Santa Gertrudis, Tropical Composite, Brangus, Droughtmaster, Hereford, Limousin, Shorthorn, Simmental and Charolais. Research conducted to date has demonstrated that the test will return an informative result for the vast majority of animals tested. The table below outlines the number of animals by breed that were tested in the research project, and the proportion of animals for which the test returned an informative result.

The test has potential application in a variety of other breeds, including cross-bred herds, and producers should contact the service laboratories for advice on the utility of the test for their herd.

For those animals where the test returns an informative result, this result is highly accurate (above 98% in the majority of cases). Only results with an accuracy value above 90% will be returned to the breeder. For those animals where the test cannot return an informative result (that is, the accuracy is not above 90%), no result will be returned.

BREED	NUMBER TESTED	INFORMATIVE RESULTS
Brahman	299	84%
Brangus	104	89%
Charolais	65	89%
Droughtmaster	102	77%
Hereford	174	96%
Limousin	297	95%
Santa Gertrudis	225	92%
Shorthorn	167	94%
Simmental	118	93%



The cost of the test will be set by the individual service providers but is expected to be in the magnitude of \$20-\$30 per animal and can be performed using hair, blood, tissue or semen samples.

An example of the test result is displayed in Figure 1. The results will describe the percentage chance of the most likely genotype, with the possible genotypes being reported including homozygous polled (PP), heterozygous polled (Ph) or homozygous horned (hh). The accuracy of the test result will be reported alongside the most likely genotype. This accuracy will range from 90% to 99%. For animals where the test cannot return an informative result (that is, the accuracy of the prediction is less than 90%) the result will be returned as ND (Not Determined).



For further assistance in understanding the genetics of polledness, or the use of the Australian Poll Gene Marker test, contact staff at Southern Beef Technology Services (SBTS).



Bull 1	Bull 2
<div>Polled gene</div>  <div>PP 98%</div>	<div>Polled gene</div>  <div>PH 95%</div>

Figure 1. Example Display of Test Result from Australian Poll Gene Marker Test

References

- "The Australian Poll Gene Marker Test" Fact Sheet, CRC for Beef Genetic Technologies, (2012), Accessed November 2013 <http://www.beefcrc.com/publications/fact-sheets.html>.
- "Transitioning to a Polled Herd" Fact Sheet, CRC for Beef Genetic Technologies, (2012), Accessed November 2013 <http://www.beefcrc.com/publications/fact-sheets.html>.
- Meat and Livestock Australia (2013), "The Australian Poll Gene Marker Test", Animal Health and Welfare Fact Sheet



AROUND "THE BEND" ABOUT A SUCCESSFUL YEAR

Not since the Junior Champion Interbreed Bull win at Royal Melbourne Show in 2003 went to "The Bend Romeo", have Chris & Leonie Daley of "The Bend South Devon Stud" been so thrilled about a win! That is until 2013 at The Royal Melbourne Show, when genetics from The Bend were highly awarded once again. This time it was for the Carcase Competition. Two steers by The Bend genetics were part of the winning Borthwick Trophy Team of 3 purebreds.

Since then semen has been collected from two herd sires at The Bend, The Bend Easyrider who is the sire of one of the Borthwick team, and The Bend Gently who was shown at National Beef Bendigo, local agricultural shows and also displayed at Field days. Several people had requested semen from Gently and the first straws have now been sold. "The 2013 year heifers, mostly by Easyrider are some of the best we have bred. It is difficult to know which ones to sell", said Leonie.

The Bend is currently a herd of 75- 80 cows, currently calving in autumn and spring. Calves are weaned at about 9 months of age and the pick of the heifers are retained for breeding and the remainder sold privately. About 6 bull calves from each drop are either retained in the herd or sold as stud stock or into commercial herds. Some of the bull calves are steered and go into carcase competitions or the Lardner Park Grass Feed Steer Trial.

The remainder are sold at around 10 -16 months of age as packaged beef to a clientele established locally and in Melbourne. Recently steers have been sold to a wholesaler supplying prime beef to Melbourne hotels and restaurants, marketed as South Devon Gippsland grass-fed beef.

Chris & Leonie have continued to show their bulls and heifers at Agricultural shows with success. "Showing to us has been a good promotional tool over the years as well as a great deal of fun." We have made many friends from all cattle breeds and the camaraderie is wonderful". Many of our show bulls have now been placed into sizable herds. The Bend also supports the Cattle Handlers Camp at the Melbourne Showgrounds each year in July, where many young people spend a week of school holidays to learn all aspects of the cattle industry.

Likewise the "Farmworld" and East Gippsland field days have been a marketing opportunity and the Lardner Park Grass Feed Steer Trial has enabled us to benchmark our South Devons against other breeds.

THE BEND SOUTH DEVON STUD

Breeding quality bulls and females for both stud and commercial cattle enterprises. Enquiries always welcome.



Herd Sire - The Bend Gently
Semen now available



The winning Borthwick Trophy Team
Melbourne Show 2013
2 steers (on left) by The Bend Genetics



Herd Sire - The Bend Easyrider
Semen now available

Chris & Leonie Daley

640 Grand Ridge Road, Mirboo North 3871

t. (03) 5664 8369 f. (03) 5664 8291 m. 0414 920 187

e. thebend.sd@skymesh.com.au w. www.thebendsouthdevon.com.au



ASHLEA SOUTH DEVONS

Its been another tough year at Ashlea . We only received 12 inches of rain for the year, resulting in a very poor winter grain crop of Barley and a very poor crop of grain Sorghum and now it's looking like another failed crop.

The failed Sorghum crop came in handy, to keep the cows going until we could get 30 of them off to the abattoir. We had to lighten up. All the older cows had to go. Fortunately we got 5 ins of unpredicted rain in March and were able to hold on to the rest of our cattle. With record yardings of up to 13000 head per week at Roma, and people trying to unload some of their cattle before they died and prices as low as 20cents per kilo, we expected Farmfest to be a failure, but we were pleasantly surprised.

We spent 3 days at our big Agricultural field days "Farmfest" just outside of Toowoomba. We had many happy clients coming in and reporting on the excellent results they have achieved by using Ashlea bulls. Some clients especially from coastal and ticky areas appreciate using South Devon—Senepol cross bulls from Ashlea because of their short hair.

This year at Farmfest they had scanning available to anyone who was interested, so we took the opportunity to scan 2 heifers and 2 bulls, with excellent results, with all coming in the "Super Elite" class.

After using South Devon bulls over our commercial cattle, comprising of Santa Gertrudis, Shorthorn and Hereford, we were amazed the growth and temperament of the progeny, Therefore Ashlea stud was born in 1994. Since the establishment of the stud we have strived to improve our cattle, paying great attention to our females. Firstly concentrating on temperament, structural correctness, muscling for meat yield, teats and fertility. We are now concentrating on polling as well.

Ashlea's first stud sire was Babrooten Hannibal 3 who was by Grove Hannibal 3 UK. out of a Burnbank female by the famous bull Palm Hills Atlas. Hannibal had a great influence on our herd, as he gave us most of the things that we were looking for. We also bought a line of females from Babrooten. We continue to strive to improve our cattle and get new bloodlines, so our clients can continue to use Ashlea bulls. We imported embryos from NZ and are now using semen from the UK. We have 16 calves on the ground from Hawkley Poll Inquest and they are looking good. We will have calves by Hawkley SAS Javlin, by August and will have calves by a new exciting sire by the end of the year.

Our commercial cattle go to JBS at Dinmore with excellent results. Cattle over 340 kg going Jap Ox and the lighter ones go MSA with most going into boning groups 2-5 which is very pleasing. We at Ashlea are always ready to welcome visitors, either to purchase cattle or just to inspect our herd.

Invest in the best..... Ashlea South Devons



ASHLEA JOANNE J14



ASHLEA JACKSON J14



ASHLEA F8 WITH SENEPOL CALF



ASHLEA JOSHUA J6

BULLS AVAILABLE SOON BY HAWKLEY POLL INQUEST AI UK

**ONE OF THE BORTHWICK CARCASE WINNERS WAS SIRED BY ASHLEA DOMINATOR HEIFERS
AVAILABLE CROSSBRED AND PURE AT TIMES.**

Ross Cauley

367 Quinalow Road Brymaroo 4403

Ph/Fax: (07) 4692 8260

Em: ashlea@skymesh.com.au

MSA Grading

STUD DIRECTORY 2014

LIFE MEMBERS - John Brown • John & Annette Cassidy • Stan Dorman • Mauree Rees • Roy & Joy Scragg

ACE	Michael Flynn	1076 Bundarra Road	ARMIDALE. NSW 2350	(02)67752213	flynn@nsw.chariot.net.au
ALPHA	Knocknatulla P.L.	1076 Bundarra Road	ARMIDALE. NSW 2350	(02)67752213	flynn@nsw.chariot.net.au
ASHLEA	J.R. & D.I. Cauley	367 Rosalie Plains Quinalow Rd	BRYMAROO. QLD 4403	(07)46928260	ashlea@skymesh.com.au
ATHLONE	G.G. & H.S. Lindsay	P.O. Box 390	ROMA. QLD 4455	0427 630711	gh.lindsay@bigpond.com
AWSM	A.M. Leese	14 Ayr Street	JAMESTOWN. SA 5491	(08)86641702	
BABROOTEN	J.D. Brian	RMB 4030 KOYUGA	TONGALA. VIC. 3622	(03)54845281	
BAROOGA	D.W. & M.J. Rees	Box 358	COLLIE. WA 6225	(08)97341240	baroogasd@gmail.com
BENNETTSWOOD	RMBennett&KLJones	P.O. Box 186	DRYSDALE. VIC. 3222	(03)52513969	kjones@gordontafe.edu.au
BETA	John M. Flynn	1076 Bundarra Road	ARMIDALE. NSW 2350	(02)67752213	flynn@nsw.chariot.net.au
BITROK	Bitrok South Devons	185 Metaira Road	RIDGLEY. TAS. 7321	0400 001751	pbitmead@bigpond.com
BOLINDA	B.E. & E.M. James	3846 Goolhi Road	GUNNEDAH. NSW 2380	(02)67435350	bolinda@skymesh.com.au
BOONDEROO	Hilary Jankelson	P.O. Box 1490	CAMBERWELL EAST Vic 3126	(03)98360989	hilary@boonderoo.com.au
BREJAYANNE	B.G. & G.D. Garratt	1259 Yarragon- Leongatha Rd	ALLAMBIE. VIC. 3823	(03)56344269	sixgarratts@iinet.net.au
CALLANISH	Callanish Grazing Co.	628 Thomsons Brook Road	DONNYBROOK. WA 6239	(08)97318216	gavinrussell@westnet.com.au
CANBERRA	D.J. & E. Brown	187/25 The Parkway	ELLENBROOK. WA 6069	(08)92973077	
DAVELLE	D.C. & R.D. Leese	14 Ayr Street	JAMESTOWN. SA 5491	(08)86641702	info@davelle.com.au
EAGLEWATCH	Mrs. V. Cochrane	4 Castle Cove	WODONGA. VIC 3690	(02)60244190	val@eaglewatchfarm.com.au
ENCORE	Ethel Nichols	P.O. Box 390	ROMA. QLD 4455	(07)46222907	ethel.nichols@hwy54.com.au
GADARA	G.H. & S.J. Huppatz	Box 55	RENDELSHAM. SA 5280	(08)87354217	
GALAXY PARK	L. Salomon	RMB 5058B STAWELL	LANDSBOROUGH VIC 3384	(03)53569334	
GHINNI GHINNI	K. Bourke	16 Erin Close	HARRINGTON. NSW 2427	(02)65561436	kerry@bourkes.com
GLENCODY	Gregory Family	67 Crowdens Road	WESTERN CREEK. TAS 7304	0438 013549	thewillowfarm6@bigpond.com
GLENSTRAE	I.W.& J.A. MacGregor	1312 Oaks Road	BRACKNELL. TAS. 7302	(03)63973328	glenstrae4@bigpond.com
GRACE GLEN	David M. Corker	RMB 115	BOYUP BROOK. WA 6244	(08)97653061	bullshop1@westnet.com.au
GUM HILL	L.G. Lines	Box 9	MT. BRYAN. SA 5418	(08)88934028	lgumhill@bigpond.com
HYLANDS	Evista Pty. Ltd.	HERNANI	via DORRIGO. NSW 2453	(02)66576133	evista1@bigpond.com

STUD DIRECTORY 2014

KILDARE	R.H. & S. McDouall		UPPER HORTON NSW 2347	(02)67827245	
KINGSWORTH	S. & L. Harris	P.O. Box 1342	BOWRAL. NSW 2576	(02)48623351	ljbrooke@bigpond.net.au
KIRNDEEN	S. & S. Hamson	P. O. Box 32	CULCAIRN. NSW 2660	(02)60297678	shaun@kirndeensouthdevon.com.au
KNOCKJARDER	J.B. McQuaker	M.S.360	BELL. QLD 4408	(07)46686719	
LILYVILLE	Michael Robertson	249 Four Foot Road	GEEVESTON. TAS. 7116	(03)62971119	s.m.hill@bigpond.net.au
LOUANNLEY	Sarah Peters	37 Cedar Street	MALENY. QLD 4552	(07)54944574	louanneley@gmail.com
LYLANNE	L.E. & M.A. Newton	1204 Caboolture River Road	UPPER CABOOLTURE QLD 4510	(07)54967846	margaret.newton1@bigpond.com
MALENY HIGH	Maleny High School	Bunya Street	MALENY. QLD 4552	(07)54998134	
MANZO GRANDE	P.A. Piavanini	Lot 1, 1135 Booth Street	NORTH COLLIE WA 6225	(08)97342080	peterpiv@bigpond.net.au
MELVIANDALE	D. & P. McKenzie	P.O. Box 77	YARRAGON. VIC 3823	(03)56342178	paulahm@dcsl.net.au
MERILBA	Merilba S.D. Stud	KINGSTON	via URALLA. NSW 2358	(02)67789126	merilba@activ8.net.au
PALTARRA	K.E. Arnold	27 Justin Road	via WILLUNGA. SA 5172	(08)85567396	paltarra@activ8.net.au
ROWINDA	R.J. & G.J. Wilton	P.O. Box 439	BEGA. NSW 2550	(02)64930494	rowindapark@iprimus.com.au
SHERWOOD PARK	S. & P. Seiffert	2210 Hendy Main Road	BELLBRAE. VIC 3228	(03)52613724	sherwoodpark.sd@bigpond.com
TESBURY	Tesbury Partnership	658 Purrumbete Estate Road	CAMPERDOWN. VIC 3260	(03)55938282	lois@tca-online.com.au
THE BEND	C. & L. Daley	640 Grand Ridge Road	MIRBOO NORTH. VIC 3871	(03)56648369	thebend.sd@skymesh.com.au
TORR DOWN	J.H.W. & S.J. Harvey	P.O. Box 23	TRENTHAM. VIC 3458	(03)54241001	jsharvey@torrdown.com.au
TWIN VALES	G.J. & N.J. Rossiter	276 Willowvale Road	WARWICK. QLD 4370	(07)46673718	atazel@bigpond.com
UNGAVA	A. & B. Mountford	Lot 23, Recreation Road	DARDANUP. WA 6236	(08)97281179	abmountford@bigpond.com.au
WATINGA	R.N. & Y.M. Hagger	4011 Rowney Road	WILLALOOKA. SA 5267	(08)87578256	watingawally@hotmail.com
WINTERWOOD	P. & N. Hutchinson	21 Rae Crescent	CHURCHILL. VIC 3842	(03)51221741	peter.hutchinson@bigpond.com
WRUWALLIN	J. & J. Cochrane	58 Sherlocks Road	PINE MOUNTAIN. QLD 4306	(07)54643821	jjcochrane@bigpond.com

Ryan Bajada	5 Chestnut Street	TRAFALGAR. VIC 3824	0435 411536	ryan_d_star@live.com
Chris Elliott	60 Sackville Street	MERENDA. VIC 3754	(03)97176962	n.j.elliott@bigpond.com
St. George State High	c/ Ashley Stuart PO Box 209	ST. GEORGE. QLD 4487	(07)46208222	astua20@eq.edu.au

GRACE GLEN SOUTH DEVONS

The Grace Glen South Devon Stud commenced in 1979. After seeing South Devon cattle being judged at the English Royal Show David Corker decided that, "I just had to have some of those beautiful cattle."

Available AI bulls were researched and in some cases inspected while still in the U.K.

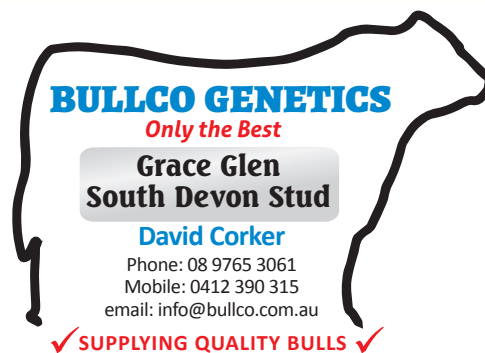
Eventually the decision was made to use Powderham Brigadier, Caerhayes Napoleon and Woodah Lumpy 3rd over Poll Shorthorn and Red Poll cows.

Later some 7/8 graded up cows were purchased from Romilly Hills and then a pure Romilly hills bull. Trevassack Challenge, Taheke Poll Rampage, Cholwells Poll Ace, Dunterton 302 and Montana Century all made contributions along the way. In recent years bulls from Lincoln, Ashlea and Barooga have made significant contributions to the stud.

Grace Glen usually has around thirty stud cows and sells most of the bulls produced privately. The herd is polled with only a calf or two every second year having horns. Birth weights usually range from 36 to 40 kg with mature cows from 750 to 800 kg and mature bulls around 1050 to 1100kg. "We look for an earlier maturing well fleshed animal" David said. "I believe that the larger framed later maturing type of South Devon has hindered the acceptance of the breed by limiting it to its maternal traits".

Selection for the traditional South Devon traits of docility and milk production are maintained. Calving ease, fat cover and 200 day weights are also very important at Grace Glen. Weighing, measuring and scanning are done to support the visual appraisal of the young stock.

"Visitors are always welcome to come and see the cattle and we love selling South Devon bulls to be put over Angus cows." He quipped. "It's the best way to improve them."



Grace Glen Gold Bullion – Foundation Sire



Barooga Agents Dream – Herd Sire



Grace Glen Jubilee – Future Sire



**BULLS SELECTED FOR
CONFORMATION • CONSTITUTION
TEMPERAMENT • PERFORMANCE**



Phil and Debra Hammond with Bob and Gwenda Wilton seeing how the Rowinda cows have settled in at their new home at Ensay.

NEW STUD FORMED FROM ROWINDA STUD DISPERSAL

Bob and Gwenda Wilton of Rowinda stud at Bemboka NSW have moved one big step closer to retirement with the first stage dispersal of cows and joined heifers from their stud herd in May this year.

First time South Devon breeders, Phil and Debra Hammond, of Ensay Victoria purchased 18 stud cows with calves at foot, plus two joined heifers and a bull as the foundation of their new stud breeding venture. Shaun and Sheree Hamson of Kirndeen South Devon stud at Culcairn purchased a mix of 19 stud and commercial females, made up of mostly joined stud heifers and some cows and calves to go into both their stud and commercial herds, while Stephen and Lisa Harris of Mittagong purchased two joined cows with big heifer calves at foot.

Phil and Debra Hammond are in traditional Hereford and Angus country in the eastern foothills of the Victorian Alps between Bairnsdale and Omeo. They intend to

run around 30 to 35 stud South Devon cows and to use a South Devon bull over their current commercial herd of Hereford cross Angus cows. They are keen to form a group of local producers to direct market South Devon and South Devon cross grass-fed beef and to explore some other niche' market opportunities in Melbourne.

Phil is obviously very impressed with his first encounters with South Devon cattle. "I'm really wrapped in these South Devons, the cows are so quiet and good to handle and so are the calves. If they get caught behind a gate they don't panic, they look around and calmly back out. If this is typical of the temperament of South Devons I don't understand why everybody isn't using them."

Bob and Gwenda will complete the dispersal of their herd in early 2015 with the sale of their remaining weaner and yearling heifers and some yearling bulls mostly by Alpha B14. They wish Phil and Debra; Shaun and Sheree and Stephen and Lisa every success in the development of their studs in the years ahead.

ROWINDA South Devons



Alpha B14 (7½ years)



B14 DAUGHTERS - J316 & J311



B14 SON - J314

B14 has produced growthy, well muscled daughters with great structures, milk and temperament.

First stage stud clearance of cows & calves and replacement heifers in Autumn 2014.

Remaining joined heifers and young bulls by B14 available for sale early 2015.

May 2014 South Devon GROUP BREEDPLAN

Bwt 200 400 600 Milk SS EME Rib Rmp RBV IMF Yir Sup Exp
+2.7 +24 +29 +39 +6 -1.2 +1.2 -0.8 -1.1 +1.3 -0.4 \$17 \$12 \$20

Bob and Gwenda Wilton - Bemboka, NSW

Ph: (02) 6493 0494 Mob: 0414 713 092 Em: rowindapark@iprimus.com.au

SOUTH DEVON VEALERS COMMAND A PREMIUM ON NSW SOUTH COAST.

Mick and Jennie Hamilton of Foxground near Berry, NSW have been producing premium quality South Devon cross vealers on their very productive small farm, Oakfield, since 1995.

After many years of pasture improvement and breeder selection they are now turning off half to pure bred South Devon vealers averaging over 220kgs. carcase weight at 10 months of age and around \$900 or more per head. The calves are purchased and promoted through two local butcher shops at Berry and Kiama to a growing clientele who wait for their availability from March to May each year.

The Berry, Kiama area is a very favoured, ex- dairy farming part of the NSW South Coast with good soils and high rainfall around 1,700 to 1,900 mms. each year. Most of the country has been split up into smaller farms and high priced lifestyle blocks, as this very attractive area is within two hours of Sydney and Wollongong.

Mick and Jennie run up to 30 breeders on their 55 acre farm. They initially started with Friesian cross Hereford females, but also infused a black Saler and some Limousin blood into them. In 1995 they purchased a South Devon bull from Annabelle Swane of Glengowa stud at Parkes and were impressed with the growth and quality of the calves. They have since purchased purebred females from Alpha, Kildare and Rowinda studs with two bulls purchased from Rick and Sue McDouall's, Kildare stud. The current bull purchased in 2009 is a son of Kildare Zorro, he is of moderate size, well-muscled, smooth and clean skinned and is producing what Mick believes are his ideal vealers.

Good Pastures and Management Equals Optimum Performance and Premium Quality

Mick has produced numerous calves over 250kgs. carcase weight and to a top of 270kgs. with dressing percentages up to 63% at 10 to 10 ½ months and a top price of \$1,060.



Some of this years South Devon cross vealers nearly ready for processing.

The cows are all joined to the South Devon bull to calve in June /July each year. They are then rotationally grazed on a variety of well fertilised native and sown pastures to maximise both milk production and calf growth. The calves gain an average of between 1.4 to 1.6 kgs. per day for much of the growing period to be weaned straight off the cows in March /April at between 370 to 420 kgs. live weight. The top calves are processed each week at Wollondilly abattoirs near Picton and then onto the two butcher shops at Berry and Kiama.

With calves of such high carcase yield and consistent quality, it's not hard to see why the local butchers are keen to market them through their shops. About eighteen years ago Nelsons Quality Meats at Gerringong started to purchase the South Devon cross vealers until the shop was sold and sales were transferred to their shop at Berry. Mick Wedd the proprietor of Berry Butchery has been buying and promoting this top quality South Devon beef to a growing group of local and visiting Sydney customers ever since. He does a promotion of this South Devon beef each year as an addition to his normal turnover and at a premium price. Mick and Jennie have also started selling and promoting their cattle through



TESBURY SOUTH DEVON

RUNNING A 200 COW COMMERCIAL HERD MADE UP OF PURE AND ANGUS CROSS SPUTH DEVONS AND REPLACEMENT FEMALES ALWAYS FOR SALE.



FOR SALE IN 2015 8 SONS OF ASHLEA DAZZLER

They are a very easy finishing well muscled even line of young bulls with low birth weights



The Kildare bull currently being used in Mick's herd.



Premium South Devon steak and the counter display at Rosebank Butchery, Kiama.

Rosebank Quality Meats at Kiama who are also keen to acquire more of these Quality South Devon calves. The two shops run a counter display and promotion of the "Oakfield South Devon" beef for the few months that the meat is available.

Enthusiastic Promoters of South Devons.

With the growing demand for South Devon cross calves, Mick has been keen to promote the breed locally and to encourage other breeders to use a South Devon bull as part of their breeding programs.

Mick and Jennie are members of a district discussion group, the South Coast Beef Producers Association, which is supported by the Agronomist and the Livestock Officer from the new Local Land Services Department. With Mick's success in pasture management and beef production, his property has been used regularly for demonstration purposes allowing the other breeders to see just how good the South Devon cattle and their crosses perform. As a result Mick has been able to help some others in the group to secure either South Devon bulls or heifers for their own herds over the last few years with a view to supplying a larger number of vealers to the local market over a more extended period.

Another example of Mick and Jennie's enthusiasm and promotion of the breed was their participation in a "Nose to Tail" dinner held at the Kiama showground in

April 2011. Mick supplied one of his South Devon cross calves to be used as the basis of a number of courses utilising the complete range of meat cuts and offal from a beef carcass. The dinner was a great success with the South Devon beef delivering consistent tenderness and flavour across the whole range of meat cuts and many complimentary remarks from the impressed and appreciative diners.

Mick and Jennie are great ambassadors for the South Devon breed. They are leading by example and are developing a growing market outlet and interest in producing premium quality South Devon beef on the beautiful South Coast of NSW.



Eddie Hansey of Rosebank Quality Meats with some prime carcasses ready to process.

TESBURY SOUTH DEVON

At Tesbury we are currently running 200 breeders, 100 pure South Devons and 100 Angus cross South Devons and replacements. We are putting a lot of effort into breeding steers suitable for our local butcher, who is supplying 2 shops in Melbourne as well as home delivery. His requirements are steers between 400 and 500kg and is really pleased with the quality of our steers with the high yields they are achieving - ave 72%. The very exciting news is that he is also building an abattoir on his farm, 10 km from here, so our steers will be slaughtered and butchered locally. What a brilliantly old fashioned sensible idea.

This year for the first time we entered a team of 5 steers in the Beef Spectacular feedback trial in NSW and we were very excited to achieve 20th place in a field of 122 entries. The steers were South Devon Angus cross. We will be entering again this year. We also won reserve champion carcass in our local Noorat carcass competition and have two pairs of steers in the Lardner grass feed trial which finishes in November.

In an absolutely mad moment we have decided to build a café on the farm beside Lake Purrumbete with the aim of using and selling our own South Devon meat. Well, it is happening as we speak and weather permitting hopefully it will be open mid October, Just in time to celebrate Ron May's [Dad] 90th birthday.

Best wishes from all at Tesbury

“ Koallah Farm sources many of its beef cattle from Tesbury South Devons because our customers like and appreciate the consistency and taste of the product. Compared with other purebred beef breeds locally, our butchers find the South Devons have a superior overall meat yield per animal. The way Tesbury South Devons are bred, raised and handled in a naturally pastured and stress-free environment maximises the breed's already lofty reputation for taste. ”



GUM HILL

When the Gum Hill herd was established in 1972 the goal was to breed a versatile Polled South Devon animal, maximising the breed traits and adapting them to the conditions of rangeland Australia.

From the beginning one of the herds emphasis was on ease of calving which would allow bulls to be sent to any area of Australia and beyond, that had a history of calving unattended and with ease. Any animal that could not calve alone was eliminated from the herd along with the progeny. Over the years this has meant that the Gum Hill bloodline has become known for this being one of its strengths. This has been a major factor in the demand for semen for export to both the United States of America and New Zealand, as well as repeat clients.

Another of the criteria set was that the Gum Hill herd would reflect the more remote environments and a decision was made to breed a medium sized animal with finish which would live through hard times and flourish in the good seasons. This has been another factor in the demand for Gum Hill bloodlines.

These two major elements have proven themselves in the field.

On Kangaroo Island, off South Australia's coastline the herd of Jeff and Val Howard which graze, alongside a cellar door and restaurant outlet for the family's Dudley Wine enterprise are known across the Island as "the red herd". Jeff has been a client for over 30 years and regularly sends drafts from his 500 breeders to the mainland to the Strathalbyn market where his animals are in a consistent demand and attract great interest.

In the Lower north of the state, David and Bev Kellock, having used several other breeds found that the South Devon temperament and easy care were right for them, having been Dairy Farmers they appreciate the docility of the breed. Run alongside a Stud and commercial Merino sheep flock they graze alongside Highway 32, and are a constant exposure of the breed.

When eye cancers became a problem with white faces animals on a station in the North East pastoral zone of South Australia at Mannahill, Ashley and Jeanette Harvie introduced South Devons to aid in the filling in of the pigmentation around the eyes, they were astounded to find that the South Devon adapted to their environment



Jeff Howard, Penneshaw, Kangaroo Island looks over 63 South Devon steers.

and with minimal handling facilities found the temperament was proven when a bull was loaded onto a trailer in a 1500 ac paddock. With only a trailer backed into a bank and a couple of gates to form a race and some hay in the trailer, the bull loaded himself. Relocating to the lower Flinders Ranges they have continued to run a commercial herd in high range and rainfall conditions.

With this kind of testament former World President, Dar Giess inspected the Gum Hill herd during the 2011 World Conference tour and found that the Gum Hill herd ticked all the boxes for the Stud and Commercial aspects of the USA cattle industry. A lengthy process followed where Gum Hill Medium Red 530 was progeny tested over 2 years, having 100 cows and heifers resulted in the export of many hundreds of straws to the USA for exclusive use by the Darlynn Cattle Co and X-E Stock Ranch and a large number to New Zealand for use by several Studs there. As Gum Hill has been a closed Stud for over 30 years with limited infusion to one family it offers a total outcross of genetics. Mr Giess is looking forward to Medium Red's progeny having an influence on his herd.

Gum Hill Medium Red ticks all the boxes for improving a herd which is looking for an economic improvement in it's base and is interested in promoting the commercial aspects of the breed.



For many years the Gum Hill Poll South Devon Stud has encouraged the Agriculture students from Burra Community School to experience 'hands on' opportunities at selection time. Gum Hill has a long history with the school having provided a steer for the Royal Adelaide Show Carcase Competition for 35 continuous years.

GUM HILL

• POLL SOUTH DEVON STUD •

ESTABLISHED AND REGISTERED 1972

MEDIUM RED 530

THE SIRE THAT TICKS THE BOXES



- **Top ranked Bull** of Red Herd and of all Gum Hill family herds for weaning and yearling weights
- **Progeny tested over 100 cows** , 2 joinings
- **Progeny were above group averages** of all other Gum Hill herds
- Comes from an **unattended herd** with a basis of **natural selection**
- Veterinarian checked for **structural soundness**
- **Sole rights** for semen to **Darlynn Cattle Co and X-E Stock Ranch USA**
- Semen delivered **on order** to **New Zealand breeders**, agent Fraser McKenzie Wanuka South Devon's
- Over **15 generations** of **pure Gum Hill genetics**
- **Exceptional temperament**
- **Progeny of consistent type**

BULLS AND COWS FOR SALE ANNUALLY SEMEN PACKAGES AVAILABLE

BULLS, AND HEIFER PROGENY OF MEDIUM RED 530 AVAILABLE

Contact the Lines family:

Glan and Daphne - Em: lgumhill@bigpond.com Ph: (08) 8893 4028

Justin - Em: linesgumhill@bigpond.com Ph: (08) 8893 4006

Haydn - Em: parraweenapartners@bigpond.com Ph: (08) 8755 3487

PO Box 9 Mt Bryan South Australia 5419



Online AuctionsPlus Sale 27th November 2014

20 Bulls and 20 Females Red and Black.

Private Sales available. Visit our website for details.

Davelle South Devon Experience – A great opportunity for a South Devon enthusiast to attend the SA Junior Heifer Expo in July each year. Providing entry fees and an animal. SDCSA offering transport assistance. Open to all aged from 8 to 23. Applications forms on our website. Davelle supporting our youth!

Herd Sires – Davelle UB Righton H26, Lincoln Toryson 39A, Ace F11 and young Davelle sires. Many local and overseas AI sires in use - We believe in Genetic Diversity!

Semen for Sale – MJB United 333U (USA) and Burtergil Harry 815 (NZ)

Stop Press – Davelle Awesome Reg. Sons sell in New Zealand to \$9,200. Show Champions. We enjoy our clients' successes!

2 bulls and a heifer to Beef 2015 at Rockhampton QLD – they are for sale contact us for details. We're not going all that way without taking our best!!

Davelle Herd Average EBV's – Using all tools available – weights, scans, visual and deep strong pedigrees - Know what you are buying? Providing a superior genetic choice for the beef industry – stud and commercial.

Gest. Len. (days)	Birth Wt. (kg)	200 Day Wt. (kg)	400 Day Wt. (kg)	600 Day Wt. (kg)	Mat. Cow Wt. (kg)	Milk (kg)	Scrotal Size (cm)	Carcase Wt. (kg)
-0.9	+0.6	+14	+23	+31	+31	+1	+0.8	+23
Eye Muscle Area (sq.cm)	Rib Fat (mm)	Rump Fat (mm)	Retail Beef Yield (%)	IMF %	Vealer Index (\$)	Supermarket Index (\$)	Export Maternal Index (\$)	
+1.3	+0.0	+0.0	+0.5	+0.1	+\$19	+\$26	+\$35	

Davelle UB Righton H26 – semen sales to New Zealand. Has been collected for USA, Canada and South Africa. "Type and Performance" contact us for details.

David & Rochelle Leese

7137 RM Williams Way Jamestown SA 5491

Phone: (08)86641702 Email: info@davelle.com.au

www.davelle.com.au



DAVELLE AWESOME ROSE D4 – HIGHEST PRICE FEMALE \$2,000 2013 OPPORTUNITY SALE



DAVELLE D8 DAGGER H29 – HIGHEST PRICED BULL \$4,050 2013 OPPORTUNITY SALE



LINCOLN TORYSON 39A – SOUND 9YO. CALVES DUE AT DAVELLE MARCH 2015



DAVELLE UB RIGHTON H26 – AT 18MTH. CALVES AT DAVELLE - VERY IMPRESSIVE



DAVELLE AWESOME REG SON BURTERGILL REG 1202 SUPREME CHAMPION SOUTH DEVON AG INNOVATION NZ SOLD FOR \$9200

"Look to Davelle for sound performance backed South Devons to increase your profits!"